

FINANCIAL FACT BOOK 2012/2013

(目次 / CONTENTS)	(頁 / PAGE)
[連結決算 / Consolidated Statements]	(1 - 16)
経営成績 (売上高、利益、収益性) Operating Results (Net Sales, Income, and Profitability)	1 - 4
財政状態 (総資産、自己資本、有利子負債) Financial Condition (Total Assets, Stockholders' Equity, and Interest-Bearing Debt)	5 - 6
セグメント情報 (事業の種類別、所在地別、地域別売上高) Segment Information (by Business Group, by Location, and Sales by Region)	7 - 9
設備投資、減価償却費、営業キャッシュ・フロー Capital Expenditures, Depreciation & Amortization, Operating Cash Flows	10
研究開発費 Research & Development	11
連結対象会社数 Number of Consolidated Subsidiaries	11
連結貸借対照表 Consolidated Balance Sheets	12 - 13
連結損益計算書 Consolidated Income Statements	14
連結キャッシュ・フロー計算書 Consolidated Cash Flow Statements	15 - 16

FINANCIAL FACT BOOK 2012/2013

(目次 / CONTENTS)

(頁 / PAGE)

[2013年3月期予想要約 / Forecast Summary for the Period Ending March 2013]	(17 - 18)
収支状況 (連結損益計算書、連結貸借対照表) Income and Expenditures (Consolidated Income Statements and Consolidated Balance Sheets)	17
ROE・ROA (連結) ROE and ROA (Consolidated)	17
セグメント情報 (分野別、所在地別) Segment Information (by Business Group, by Location)	18

[注記]

業績見通しには、現時点で入手可能な情報と当社の今後の計画等の将来予測が含まれています。国内外の経済事情、為替レート等不確実な要因の状況変化によって、実際の業績が見通しとは大きく異なる可能性があることをご承知おきください。

[Notes]:

These earnings forecasts include information that was currently available at the time and predictions of our company's future plans. Please be aware that actual results may differ greatly from these forecasts because of changes in uncertain factors such as international and domestic economic information and exchange rates.

2012年11月20日
Nov 20, 2012

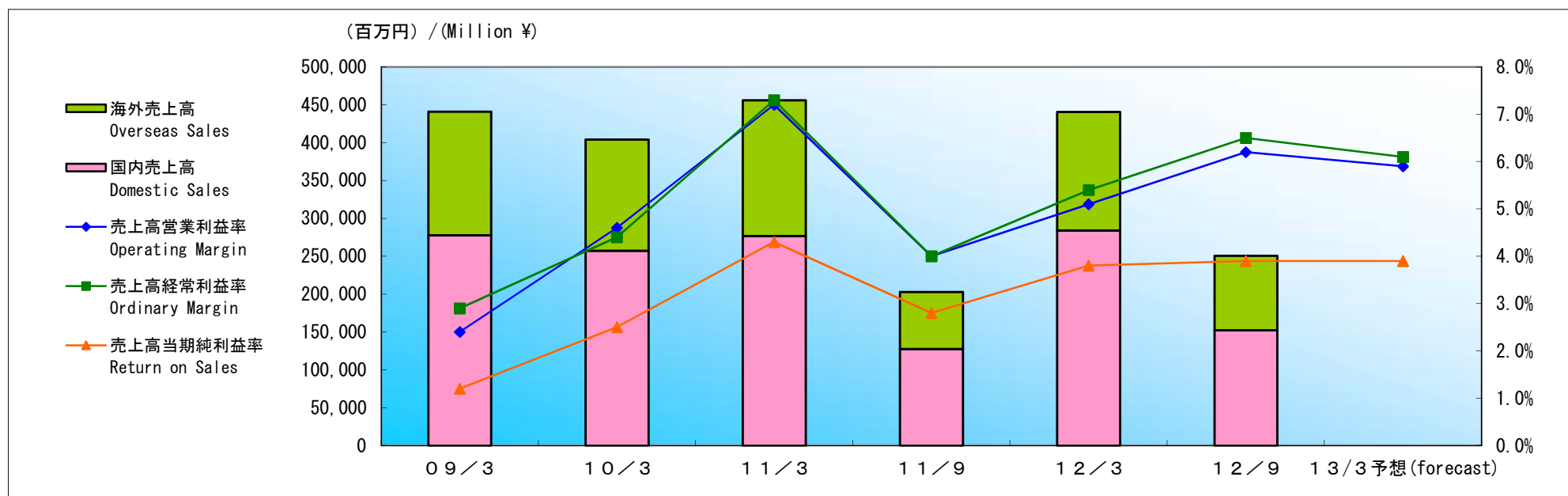
日本発条株式会社
NHK Spring Co., Ltd.

経営成績

Financial Data

(1) 売上高

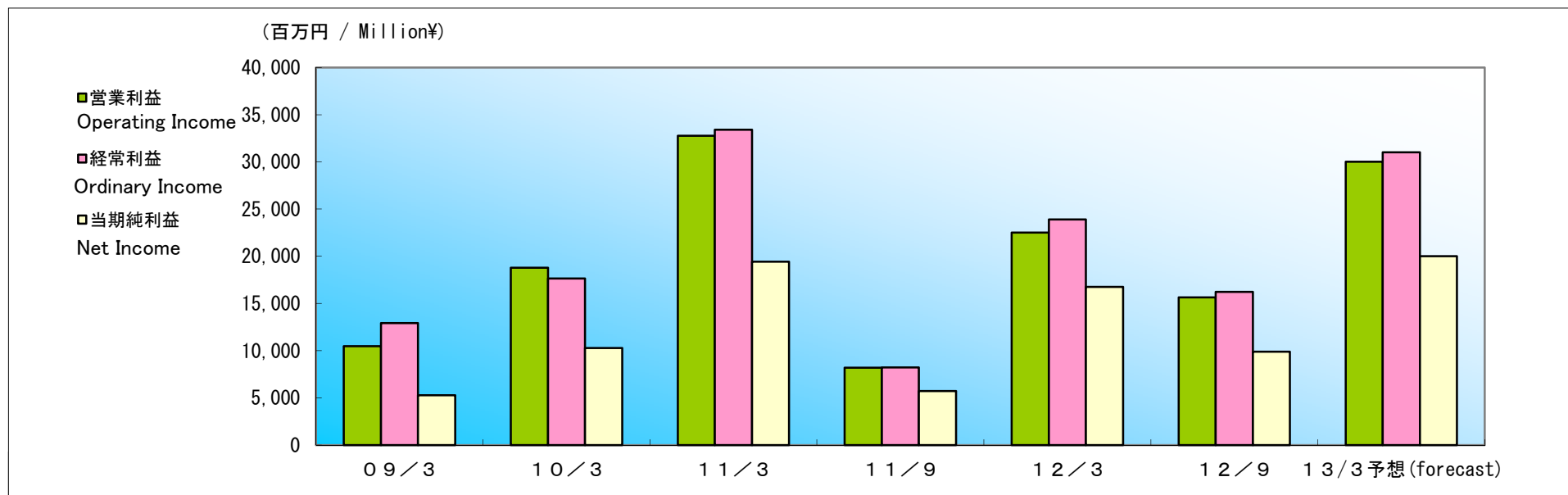
Net Sales



		百万円 / Million ¥						
		09/3	10/3	11/3	11/9	12/3	12/9	13/3 予想 (forecast)
売上高	Net Sales	440,908	404,143	456,198	202,959	440,752	250,685	510,000
前年比	Year-over-Year	(9.1%)	(8.3%)	12.9%	(10.9%)	(3.4%)	23.5%	15.7%
国内売上高	Domestic Sales	277,740	257,303	276,816	127,424	284,219	152,311	-
前年比	Year-over-Year	(5.8%)	(7.4%)	7.6%	(7.4%)	2.7%	19.5%	-
海外売上高	Overseas Sales	163,167	146,839	179,381	75,534	156,533	98,374	-
前年比	Year-over-Year	(14.1%)	(10.0%)	22.2%	(16.3%)	(12.7%)	30.2%	-
売上高営業利益率	Operating Margin	2.4%	4.6%	7.2%	4.0%	5.1%	6.2%	5.9%
売上高経常利益率	Ordinary Margin	2.9%	4.4%	7.3%	4.0%	5.4%	6.5%	6.1%
売上高当期純利益率	Return on Sales	1.2%	2.5%	4.3%	2.8%	3.8%	3.9%	3.9%

(2) 利益

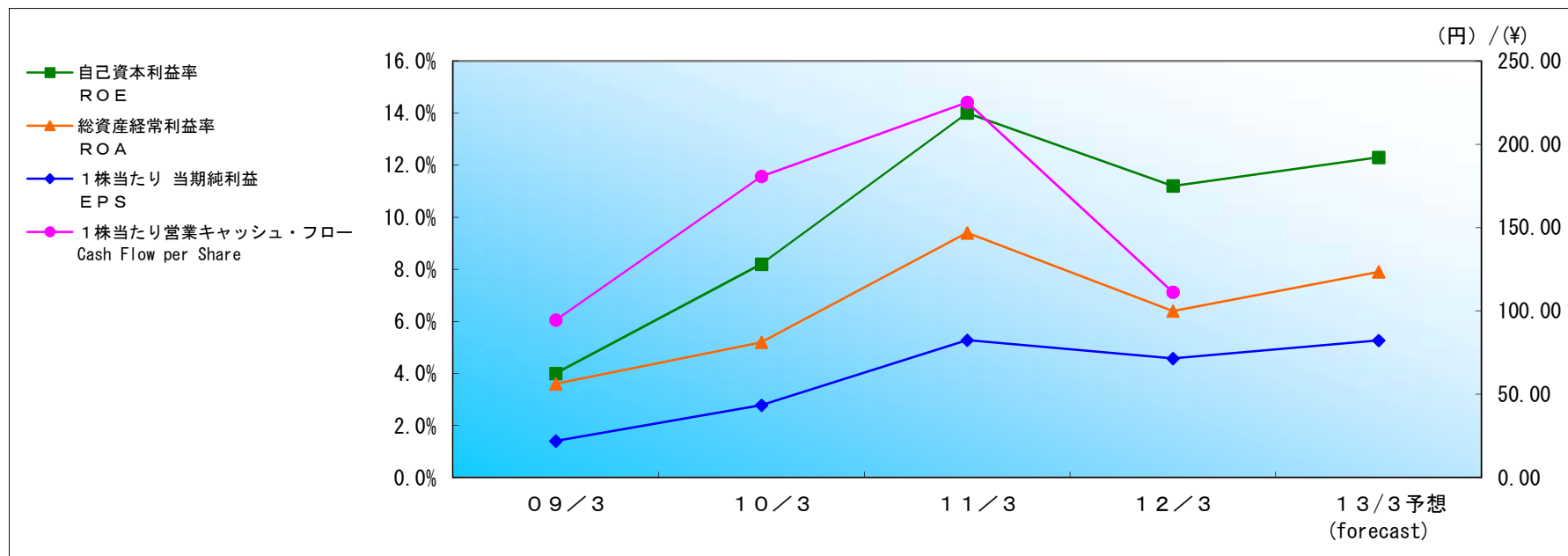
Income



		百万円 / Million¥						
		09/3	10/3	11/3	11/9	12/3	12/9	13/3 予想 (forecast)
営業利益	Operating Income	10,459	18,785	32,757	8,205	22,493	15,644	30,000
前年比	Year-over-Year	(65.5%)	79.6%	74.4%	(50.3%)	(31.3%)	90.7%	33.4%
経常利益	Ordinary Income	12,925	17,631	33,407	8,217	23,884	16,229	31,000
前年比	Year-over-Year	(58.8%)	36.4%	89.5%	(49.4%)	(28.5%)	97.5%	29.8%
当期純利益	Net Income	5,262	10,290	19,420	5,722	16,741	9,876	20,000
前年比	Year-over-Year	(74.2%)	95.6%	88.7%	(39.4%)	(13.8%)	72.6%	19.5%

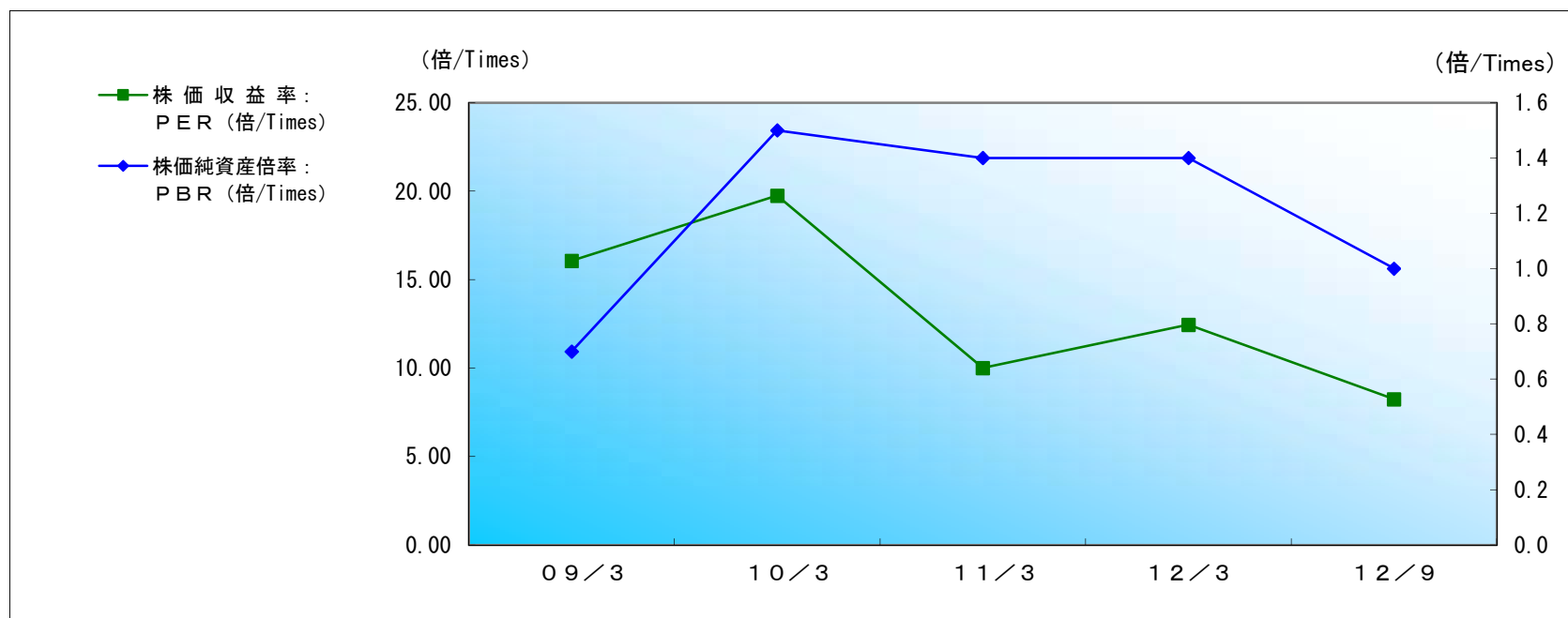
(3) 収益性/ Profitability

①自己資本利益率(ROE)、総資産経常利益率(ROA)、1株当たり当期純利益(EPS) 他



		(円)/(¥)				
		09/3	10/3	11/3	12/3	13/3 予想 (forecast)
自己資本利益率	ROE	4.0%	8.2%	14.0%	11.2%	12.3%
総資産経常利益率	ROA	3.6%	5.2%	9.4%	6.4%	7.9%
1株当たり 当期純利益	EPS	21.98	43.45	82.44	71.47	82.33
1株当たり営業キャッシュ・フロー	Cash Flow per Share	94.58	180.75	225.24	111.27	-

②株価収益率(PE R)、株価純資産倍率(PBR)、株価営業キャッシュ・フロー倍率(PCFR)



	09/3	10/3	11/3	12/3	12/9
期末日株価 (円) : Closing Share Price at Fiscal Year End (¥)	353	858	824	890	670
株 価 収 益 率 : PE R (倍/Times)	16.06	19.75	10.00	12.45	8.24
株価営業キャッシュ・フロー倍率 (倍/Times) : Price Operating Cash Flow Ratio	3.7	4.7	3.7	8.0	11.2
株価純資産倍率 : PBR (倍/Times)	0.7	1.5	1.4	1.4	1.0

12/9 株価収益率は、第2四半期連結累計期間の1株当たり純利益 (40.65円) × 2を使用

12/9 PER; EPS (¥40.65) in the 1st half × 2

12/9 株価営業キャッシュ・フロー倍率は、第2四半期連結累計期間の1株当たり営業キャッシュ・フロー (30.01円) × 2を使用

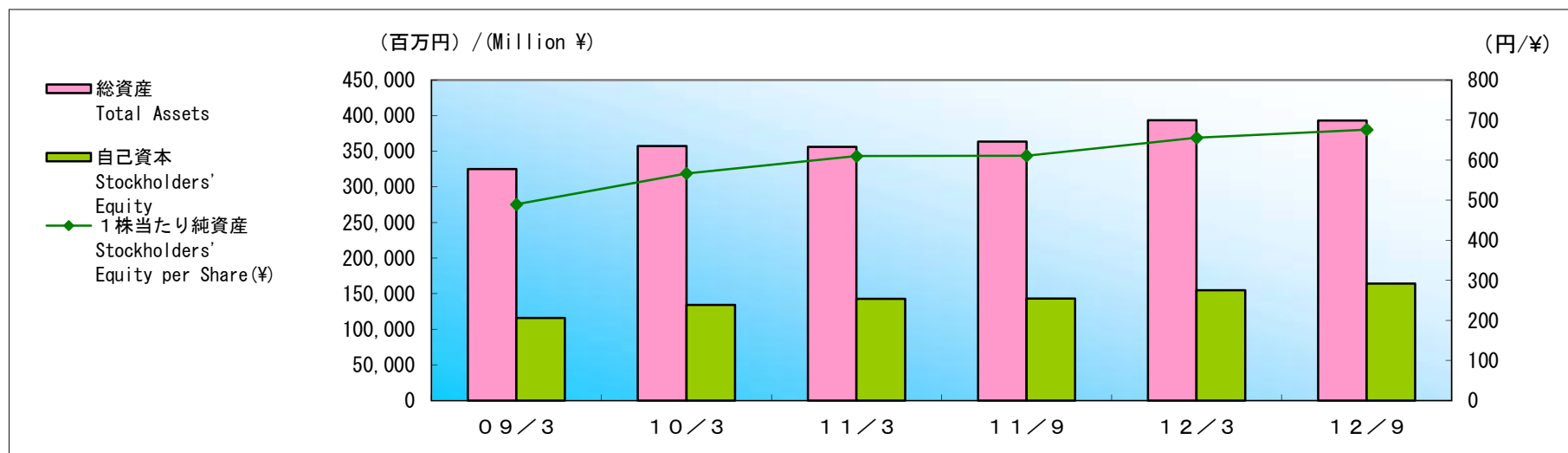
12/9 Price Operating Cash Flow Ratio; Cash Flow Per Share (¥30.01) in the 1st half × 2

財政状態

Financial Condition

(1) 総資産、自己資本、自己資本比率、1株当たり純資産

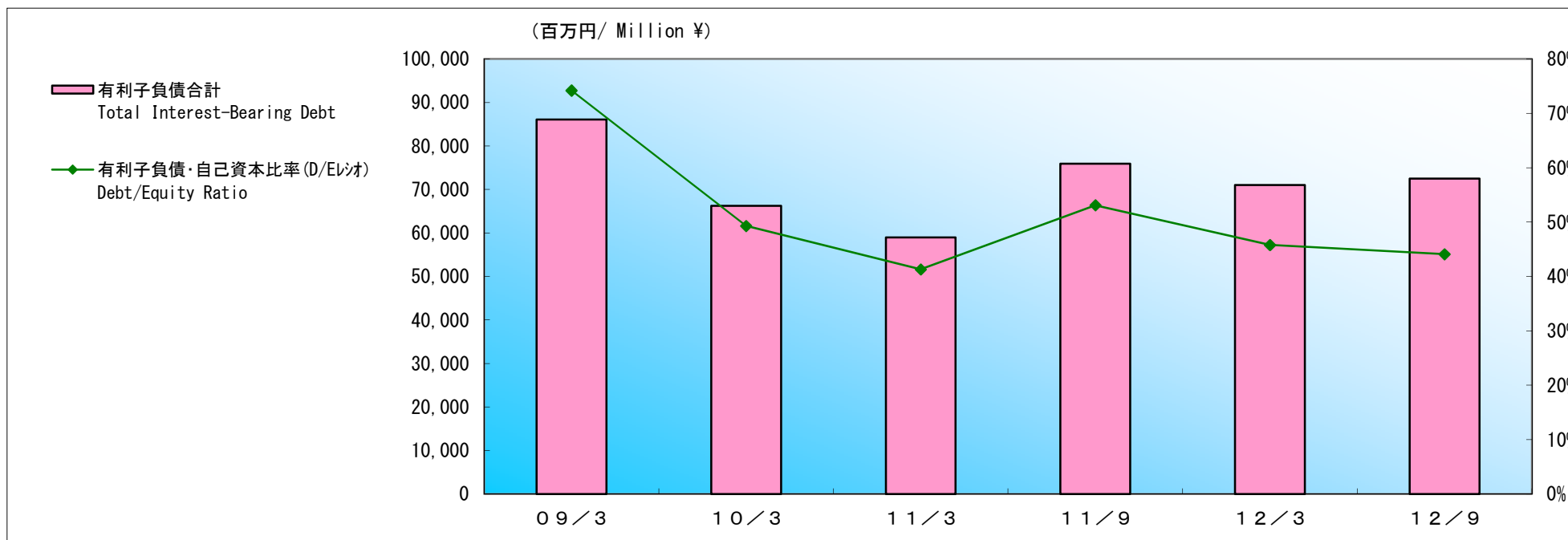
Total Assets, Stockholders' Equity, Stockholders' Equity Ratio, Stockholders' Equity per Share



		百万円/Million ¥					
		09/3	10/3	11/3	11/9	12/3	12/9
総資産	Total Assets	324,888	357,141	356,048	363,610	393,695	393,004
自己資本	Stockholders' Equity	115,961	134,242	142,804	143,042	154,911	164,234
自己資本比率	Stockholders' Equity to Total Assets Ratio	35.7%	37.6%	40.1%	39.3%	39.3%	41.8%
1株当たり純資産	Stockholders' Equity per Share(¥)	489.57	567.01	610.07	611.11	655.86	676.15

(2) 有利子負債、有利子負債・自己資本比率(D/Eレシオ)

Interest-Bearing Debt, Debt/Equity Ratio

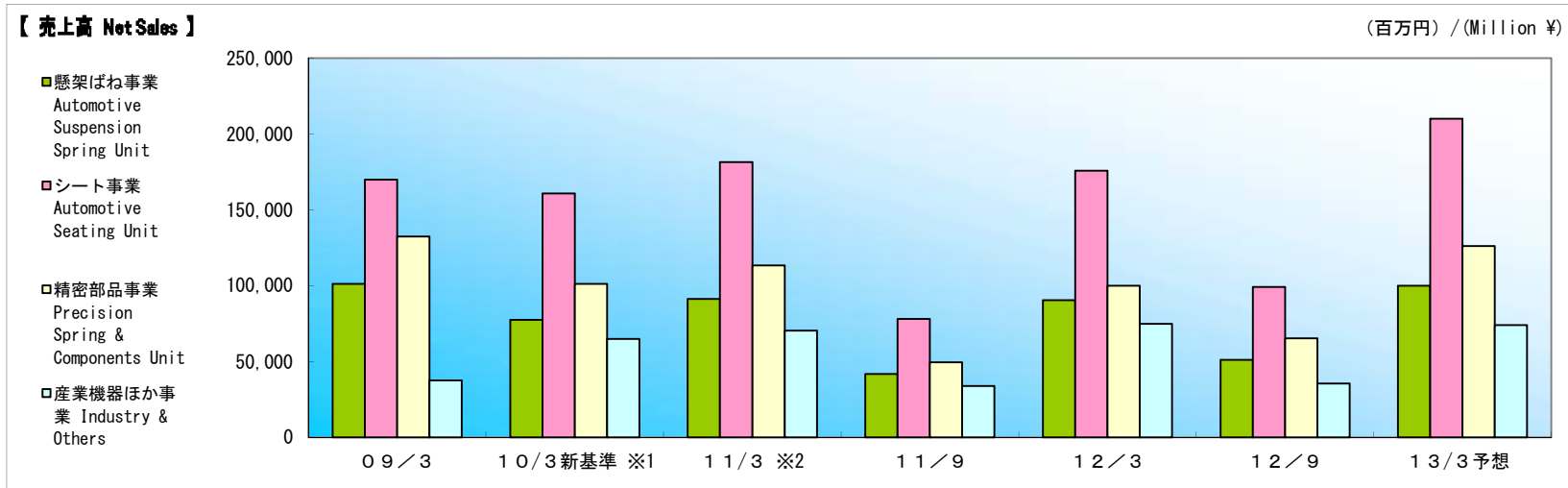


		百万円/ Million ¥					
		09/3	10/3	11/3	11/9	12/3	12/9
短期借入金	Short-Term Debt	31,937	20,073	19,512	26,398	25,077	27,376
長期借入金	Long-Term Debt	55,973	48,203	37,296	42,333	37,139	41,039
(うち一年以内返済)	(Due Within One Year)	(19,857)	(15,617)	(12,841)	(14,120)	(13,057)	(15,321)
内部取引の消去	Intersegment Sales	(4,853)	(5,050)	(10,845)	(15,827)	(17,213)	(21,922)
借入金合計	Total Borrowings	83,057	63,227	45,964	52,904	45,003	46,493
社債	Corporate Bond	-	-	10,000	20,000	20,000	20,000
コマーシャル・ペーパー	Commercial Paper	3,000	3,000	3,000	3,000	6,000	6,000
有利子負債合計	Total Interest-Bearing Debt	86,057	66,227	58,964	75,904	71,003	72,493
有利子負債・自己資本比率(D/Eレシオ)	Debt/Equity Ratio	74.2%	49.3%	41.3%	53.1%	45.8%	44.1%
純有利子負債合計	Net interest-Bearing Debt	54,566	30,205	5,663	25,545	11,786	23,619

セグメント情報

Segment Information

(1) 事業の種類別セグメント情報



		09/3	10/3 新基準 ※1	11/3 ※2	11/9	12/3	12/9	13/3 予想 (forecast)
売上高:	懸架ばね事業 Automotive Suspension Spring Unit	101,194	77,462	91,206	41,639	90,334	50,928	100,000
Net Sales	シート事業 Automotive Seating Unit	169,870	160,740	181,426	78,079	175,714	99,194	210,000
	精密部品事業 Precision Spring & Components Unit	132,404	101,073	113,306	49,455	99,961	65,191	126,000
	産業機器ほか事業 Industry & Others	37,438	64,866	70,259	33,785	74,742	35,371	74,000
	連結 Consolidated	440,908	404,143	456,198	202,959	440,752	250,685	510,000
セグメント利益:								
(営業利益)	懸架ばね事業 Automotive Suspension Spring Unit	344	517	7,168	2,644	6,814	4,954	9,000
Segment Profit (Operating Income)	シート事業 Automotive Seating Unit	3,537	6,539	9,842	2,743	8,134	6,574	13,000
	精密部品事業 Precision Spring & Components Unit	4,333	9,252	11,818	1,256	3,508	2,426	4,100
	産業機器ほか事業 Industry & Others	2,244	2,475	3,927	1,561	4,036	1,689	3,900
	連結 Consolidated	10,459	18,785	32,757	8,205	22,493	15,644	30,000

※1 2010年度からセグメント区分を変更しております。2010年3月期の新セグメントの数字は、比較を可能にするため組み替えたもので、未監査の数字です。
 ※1 From FY 2010, the company have reviewed segment category. The figure for FY 2009 are restsed based on new segment category (unaudited).

※2 2011年度から全社費用等を各セグメントに配賦しております。2011年3月期の数字は、比較を可能にするため全社費用等を配賦したもので、未監査の数字です。
 ※2 From FY 2011, the company have allocated adjustment to each segment category. The figure for FY 2010 are restsed based on new allocation (unaudited).

(2) 所在地別セグメント

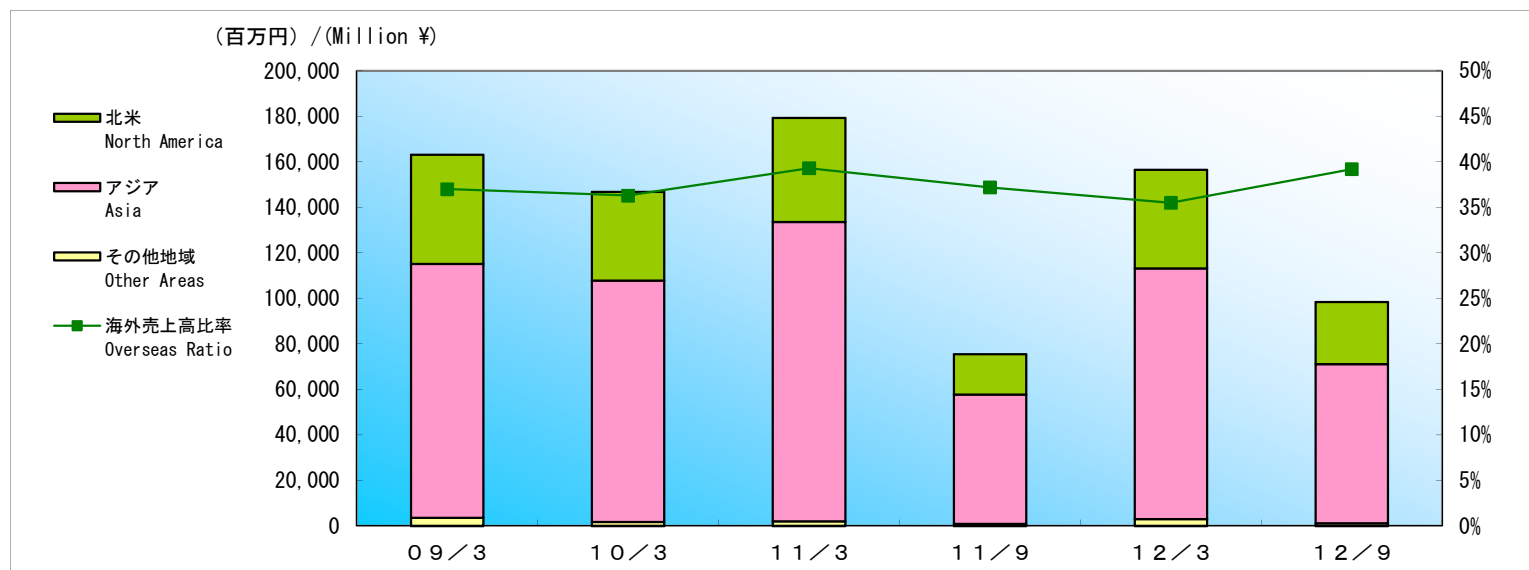
Segment by Location

			百万円/ Million ¥						
			09/3	10/3	11/3	11/9	12/3	12/9	13/3 予想 (forecast)
売上高 :	日本 :	Japan							
Net Sales	対外部顧客	For Customers	305,034	288,589	309,200	141,772	313,677	169,055	336,626
	セグメント間	Intersegment	11,394	15,814	17,444	8,808	20,376	7,987	14,373
	計	Total	316,428	304,403	326,645	150,580	334,054	177,042	351,000
	北米 :	North America							
	対外部顧客	For Customers	45,755	37,239	43,430	15,974	39,711	24,662	54,771
	セグメント間	Intersegment	249	259	259	126	276	163	228
	計	Total	46,005	37,498	43,690	16,100	39,988	24,825	55,000
	アジア :	Asia							
	対外部顧客	For Customers	90,117	78,313	103,567	45,212	87,363	56,967	118,602
	セグメント間	Intersegment	1,063	1,152	1,384	556	1,338	536	1,397
	計	Total	91,181	79,465	104,951	45,769	88,702	57,503	120,000
	消去	Intersegment Sales	(12,707)	(17,225)	(19,088)	(9,492)	(21,992)	(8,686)	(16,000)
	連結	Consolidated	440,908	404,143	456,198	202,959	440,752	250,685	510,000
営業利益 :	日本	Japan	1,419	9,708	17,678	4,048	15,809	9,311	18,000
Operating Income	北米	North America	192	622	1,657	(65)	383	848	2,000
	アジア	Asia	8,847	8,455	13,421	4,222	6,299	5,484	10,000
	連結	Consolidated	10,459	18,785	32,757	8,205	22,493	15,644	30,000

※2010年9月期、2011年3月期、2011年9月期及び2012年9月期の所在地別セグメントは比較を可能とするため記載しており未監査の数字です。

※Segment by location results for the Second Quarter 2010, FY2010, the Second Quarter 2011 and the Second Quarter 2012 which indicated in order to make comparison possible, was exempt from Quarterly review (audit).

(3) 地域別売上高 Sales by Region

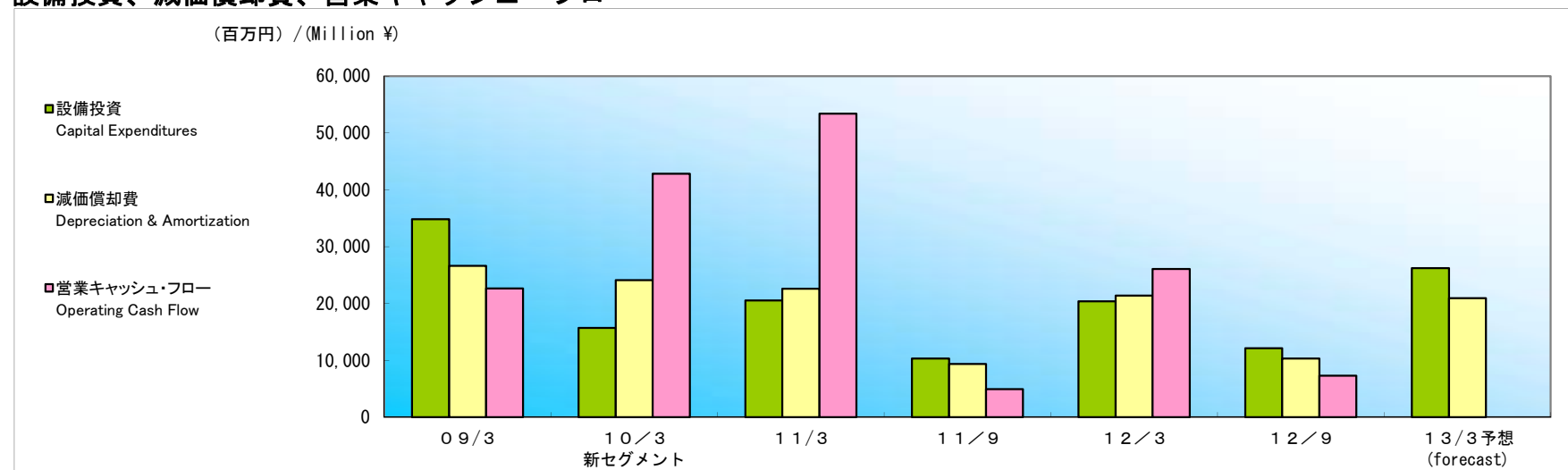


		百万円/ Million ¥						
		09/3	10/3	11/3	11/9	12/3	12/9	
北米	売上高	Net Sales	48,055	38,924	45,760	17,805	43,353	27,229
North America	構成比	Composition	10.9%	9.6%	10.0%	8.8%	9.8%	10.9%
	前年比	Year-over-Year	(14.0%)	(19.0%)	17.6%	(26.9%)	(5.3%)	52.9%
アジア	売上高	Net Sales	111,584	106,105	131,639	56,774	110,102	70,001
Asia	構成比	Composition	25.3%	26.3%	28.9%	28.0%	25.0%	27.9%
	前年比	Year-over-Year	(14.2%)	(4.9%)	24.0%	(12.8%)	(16.4%)	23.3%
その他地域	売上高	Net Sales	3,528	1,809	1,981	954	3,077	1,143
Other Areas	構成比	Composition	0.8%	0.4%	0.4%	0.5%	0.7%	0.5%
	前年比	Year-over-Year	(14.3%)	(48.7%)	9.5%	12.5%	55.3%	19.8%
海外売上高合計		Overseas Total	163,167	146,839	179,381	75,534	156,533	98,374
海外売上高比率		Overseas Ratio	37.0%	36.3%	39.3%	37.2%	35.5%	39.2%

※2010年9月期、2011年3月期、2011年9月期及び2012年9月期の地域別売上高は比較を可能とするため記載しており未監査の数字です。

※Sales by Region results for the Second Quarter 2010, FY2010, the Second Quarter 2011 and the Second Quarter 2012 which indicated in order to make comparison possible, was exempt from Quarterly review (audit).

設備投資、減価償却費、営業キャッシュ・フロー



百万円/ Million ¥

		09/3	10/3 新セグメント	11/3	11/9	12/3	12/9	13/3 予想 (forecast)
設備投資	Capital Expenditures	34,800	15,695	20,538	10,300	20,370	12,133	26,204
前年比	Year-over-Year	0.1%	(54.9%)	30.9%	(3.7%)	(0.8%)	17.8%	28.6%
減価償却費	Depreciation & Amortization	26,600	24,074	22,584	9,345	21,371	10,321	20,946
前年比	Year-over-Year	16.0%	(9.5%)	(6.2%)	(14.1%)	(5.4%)	10.4%	(2.0%)
営業キャッシュ・フロー	Operating Cash Flow	22,639	42,807	53,409	4,934	26,063	7,288	-
前年比	Year-over-Year	(33.9%)	89.1%	23.9%	(80.2%)	(51.2%)	47.7%	-

* 事業セグメント別設備投資・減価償却費内訳 Capital Expenditure, Depreciation & Amortization by Sales Composition

懸架ばね事業	設備投資	Capital Expenditures	9,027	2,305	2,498	975	4,159	2,641	5,213
Automotive Suspension Spring Unit	減価償却費	Depreciation & Amortization	6,705	5,031	4,676	1,560	4,128	1,983	4,092
シート事業	設備投資	Capital Expenditures	8,622	3,312	5,744	3,786	5,330	3,352	6,082
Automotive Seating Unit	減価償却費	Depreciation & Amortization	5,940	5,880	4,975	2,043	4,665	2,222	4,367
精密部品事業	設備投資	Capital Expenditures	15,475	9,161	10,763	4,681	9,487	5,453	12,454
Precision Spring & Components Unit	減価償却費	Depreciation & Amortization	12,608	11,437	11,273	5,075	10,631	5,200	10,541
産業機器ほか事業	設備投資	Capital Expenditures	1,675	916	1,532	857	1,392	685	2,452
Industry & Others	減価償却費	Depreciation & Amortization	1,346	1,724	1,639	665	1,946	916	1,944

※2010年度からセグメント区分を変更しております。2010年3月期の新セグメントの数字は、比較を可能にするため組み替えて表示しております。

※From FY 2010, the company have reviewed segment category. The figure for FY 2009 is restsed based on new segment category for comparison.

研究開発費 Research & Development

		百万円/ Million ¥				
		1 0 / 3	1 1 / 3	1 2 / 3	1 2 / 9	1 3 / 3 予想 (forecast)
研究開発費	Research & Development (Million ¥)	9,612	9,786	10,055	5,277	11,050
売上高比率	R&D per Sales Ratio	2.4%	2.1%	2.3%	2.1%	2.2%

連結対象会社数 Number of Consolidated Subsidiaries

		1 0 / 3	1 1 / 3	1 1 / 9	1 2 / 3	1 2 / 9
連結子会社 :	Consolidated Subsidiaries					
国内	Domestic	14	15	16	16	17
海外	Overseas	12	12	13	13	13
計	Total	26	27	29	29	30
持分法適用会社 :	Affiliated Companies					
国内	Domestic	7	6	6	6	5
海外	Overseas	3	3	3	2	2
計	Total	10	9	9	8	7

連結貸借対照表 Consolidated Balance Sheets

百万円/ Million ¥

資産の部	Assets	09/3	10/3	11/3	11/9	12/3	12/9
流動資産	Current Assets						
現金及び預金	Cash and Bank Deposits	31,490	36,021	53,300	50,359	59,217	48,873
受取手形及び売掛金	Notes and Accounts Receivable, Trade	61,241	88,337	77,950	81,537	101,631	104,123
たな卸資産	Inventories	34,845	30,699	31,998	32,020	33,072	35,804
繰延税金資産	Deferred Income Taxes	3,891	4,510	4,674	5,012	3,992	4,079
その他	Other Current Assets	12,757	14,220	13,424	18,875	15,171	14,994
貸倒引当金	Allowance for Doubtful Receivables	(360)	(74)	(351)	(233)	(177)	(137)
流動資産合計	Total Current Assets	143,865	173,714	180,996	187,572	212,907	207,737
固定資産	Noncurrent Assets						
有形固定資産	Property, Plant and Equipment, Net						
建物及び構築物	Buildings and Structures	43,392	44,232	41,039	40,328	40,440	42,474
機械装置及び運搬具	Machinery and Equipment	44,872	40,351	36,074	33,546	33,569	36,371
土地	Land	27,332	28,393	29,866	29,714	28,871	30,650
リース資産	Lease Assets	3,828	4,180	3,389	2,837	2,842	2,751
建設仮勘定	Construction in Progress	7,116	3,324	5,543	8,029	6,183	6,164
その他	Others	6,897	5,761	5,631	5,323	5,271	5,819
有形固定資産合計	Total Property, Plant and Equipment, Net	133,439	126,245	121,544	119,780	117,178	124,230
無形固定資産	Goodwill and Intangible Assets						
のれん	Goodwill	998	367	-	-	-	244
その他	Others	2,876	2,426	2,383	2,558	2,797	3,088
無形固定資産合計	Total Goodwill and Intangible Assets	3,874	2,794	2,383	2,558	2,797	3,333
投資その他の資産	Investments, Long-Term Receivables and Other Assets						
投資有価証券	Investment Securities	37,170	48,244	44,041	44,223	48,261	39,548
長期貸付金	Long-Term Loans	1,104	614	439	387	1,047	3,182
繰延税金資産	Deferred Income Taxes	1,668	2,055	2,319	2,404	3,206	3,784
その他	Other Investments	4,179	3,849	4,908	6,817	8,464	11,358
貸倒引当金	Allowance for Doubtful Receivables	(414)	(376)	(584)	(133)	(168)	(171)
投資その他の資産合計	Total Investments, Long-Term Receivables and Other Assets	43,709	54,387	51,123	53,698	60,812	57,702
固定資産合計	Total Noncurrent Assets	181,023	183,426	175,051	176,037	180,788	185,266
資産合計	Total Assets	324,888	357,141	356,048	363,610	393,695	393,004

連結貸借対照表

Consolidated Balance Sheets

百万円/ Million ¥

負債及び純資産の部	Liabilities and Net Assets	09/3	10/3	11/3	11/9	12/3	12/9
負債の部	Liabilities						
流動負債	Current Liabilities						
支払手形及び買掛金	Notes and Accounts Payable	68,373	94,229	91,255	69,247	77,904	69,589
電子記録債務	Electronically Recorded Obligations	-	-	-	18,666	29,953	28,513
短期借入金	Bank Loans	46,941	30,641	21,509	24,691	22,581	24,123
未払法人税等	Income Taxes	736	3,143	5,310	2,241	3,422	3,328
繰延税金負債	Deferred Income Taxes	662	906	1,076	1,109	768	775
役員賞与引当金	Allowance for Directors' Bonuses	210	180	190	119	229	125
設備支払手形	Equipment Notes Payable	1,459	354	536	997	2,089	2,184
その他	Others	22,777	23,960	24,663	22,952	26,806	28,746
流動負債合計	Total Current Liabilities	141,160	153,415	144,542	140,025	163,754	157,386
固定負債	Long-Term Liabilities						
社債	Corporate Bond	-	-	10,000	20,000	20,000	20,000
長期借入金	Long-Term Debt	36,115	32,586	24,454	28,212	22,421	22,369
リース債務	Lease Obligations	3,512	3,550	2,889	2,456	2,404	2,454
繰延税金負債	Deferred Income Taxes	4,267	9,419	8,118	6,605	6,845	4,790
退職給付引当金	Provision for retirement benefits	12,707	11,791	10,081	9,943	9,425	10,773
役員退職慰労引当金	Provision for directors' retirement benefits	1,815	557	682	611	607	500
執行役員退職慰労引当金	Provision for officers' retirement benefits	-	583	667	591	688	660
持分法適用に伴う負債	Liabilities from application of equity method	76	91	-	49	-	-
その他	Others	188	611	868	750	807	847
固定負債合計	Total Long-Term Liabilities	58,683	59,193	57,761	69,221	63,201	62,396
負債合計	Total Liabilities	199,843	212,608	202,303	209,246	226,956	219,782
純資産の部	Net Assets						
株主資本	Stockholders' Equity						
資本金	Common Stock	17,009	17,009	17,009	17,009	17,009	17,009
資本剰余金	Additional Paid-in Capital	17,295	17,295	17,523	17,523	17,900	19,308
利益剰余金	Retained Earnings	89,408	97,962	114,642	118,525	127,904	135,891
自己株式	Treasury Stock	(4,653)	(4,742)	(6,755)	(6,764)	(5,345)	(793)
株主資本合計	Total Stockholders' Equity	119,060	127,526	142,420	146,294	157,469	171,415
その他の包括利益累計額	Accumulated Other Comprehensive Income(Loss)						
その他有価証券評価差額金	Unrealized Gain or Loss on Available-for-Sale Securities	7,534	14,673	12,208	10,470	13,413	9,155
繰延ヘッジ損益	Deferred Gain or Loss on Hedges	0	(4)	(1)	(5)	-	(0)
為替換算調整勘定	Cumulative Translation Adjustments	(10,632)	(7,952)	(11,823)	(13,715)	(15,971)	(16,336)
その他の包括利益累計額合計	Total Accumulated other comprehensive income(Loss)	(3,098)	6,716	383	(3,251)	(2,557)	(7,181)
少数株主持分	Minority Interests	9,082	10,290	10,940	11,320	11,827	8,986
純資産合計	Total Net Assets	125,044	144,533	153,744	154,363	166,739	173,221
負債及び純資産合計	Total Liabilities and Net Assets	324,888	357,141	356,048	363,610	393,695	393,004

連結損益計算書

Consolidated Income Statements

百万円/ Million ¥

		09/3	10/3	11/3	11/9	12/3	12/9
売上高	Net Sales	440,908	404,143	456,198	202,959	440,752	250,685
売上原価	Cost of Sales	396,219	353,303	389,142	178,209	384,643	216,389
売上総利益	Gross Profit	44,689	50,839	67,056	24,749	56,109	34,296
販売費及び一般管理費	Selling General and Administrative Expenses	34,229	32,053	34,298	16,544	33,616	18,651
営業利益	Operating Income	10,459	18,785	32,757	8,205	22,493	15,644
営業外収益	Non-Operating Income	6,172	3,638	4,658	2,328	4,294	1,728
受取利息及び配当金	Interest Income and Dividends Income	1,242	596	914	837	1,599	691
持分法による投資利益	Investment Profit on Equity Method	1,255	882	1,481	688	865	163
不動産賃貸料	Real Estate Rental Income	960	909	880	345	833	410
屑売却代	Waste and Scrap Sale Income	1,682	42	—	—	—	—
その他	Others	1,031	1,207	1,381	457	996	463
営業外費用	Non-Operating Expenses	3,706	4,792	4,007	2,316	2,903	1,143
支払利息	Interest Expense	1,467	1,316	960	464	887	412
固定資産除却損	Loss on Disposal of Fixed Assets	466	621	475	130	317	58
その他	Others	1,772	2,854	2,572	1,721	1,699	672
経常利益	Ordinary Income	12,925	17,631	33,407	8,217	23,884	16,229
特別利益	Extraordinary Gains	230	309	192	117	861	914
固定資産売却益	Gains on Sales of Fixed Assets	—	130	—	—	99	199
投資有価証券売却益	Gains on Sales of Investments in Securities	17	22	33	—	523	—
その他	Others	213	156	158	117	238	715
特別損失	Extraordinary Losses	3,548	2,617	2,651	598	945	2,162
減損損失	Impairment Loss on Fixed Assets	1,624	1,058	19	63	350	335
その他	Others	1,924	1,558	2,632	535	595	1,827
税金等調整前当期純利益	Income before Taxes and Minority Interest Income	9,608	15,323	30,948	7,736	23,799	14,981
法人税等	Income Taxes	2,076	4,422	9,274	2,100	6,328	3,965
法人税等調整額	Deferred Taxes	1,886	(447)	123	(692)	(731)	359
少数株主利益	Minority Interest Income	382	1,059	2,129	605	1,460	781
当期純利益	Net Income	5,262	10,290	19,420	5,722	16,741	9,876

連結キャッシュ・フロー計算書

Consolidated Cash Flow Statements

百万円/ Million ¥

		09/3	10/3	11/3	11/9	12/3	12/9
営業活動によるキャッシュ・フロー	Operating Activities						
税金等調整前当期純利益	Net Income before Income Taxes and Minority Interests	9,608	15,323	30,948	7,736	23,799	14,981
減価償却費	Depreciation & Amortization	26,600	24,074	22,584	10,477	21,371	10,321
減損損失	Impairment Loss on Fixed Assets	1,624	1,058	19	63	350	335
退職給付引当金増減額	Increase (Decrease) in Retirement Benefits	(1,250)	(1,679)	(1,675)	(219)	(503)	(21)
受取利息及び受取配当金	Interest and Dividends Received	(1,242)	(596)	(914)	(837)	(1,599)	(691)
支払利息	Interest Expenses	1,467	1,316	960	464	887	412
為替差損益	Exchange Profit or Loss	(247)	493	513	601	304	72
持分法による投資利益	Investment Profit on Equity Method	(1,255)	(882)	(1,481)	(688)	(865)	(163)
有形固定資産売却損益	(Gain) Loss on Property, Plant and Equipment	715	568	476	129	250	(149)
投資有価証券売却損益	(Gain) Loss on Sales of Short-Term Investments and Investment Securities	(17)	(14)	(33)	—	(503)	—
売上債権の増減額	(Increase) Decrease in Notes and Accounts Receivable	31,053	(26,519)	10,614	(3,967)	(25,111)	2,057
たな卸資産の増加額	(Increase) Decrease in Inventories	1,183	4,760	(2,038)	(135)	(1,380)	(274)
仕入債務の増減額	Increase (Decrease) in Notes and Accounts Payable	(39,913)	24,494	(3,124)	(1,933)	17,607	(16,521)
その他	Others	2,093	707	2,484	(3,024)	(2,441)	538
小計	Subtotal	30,419	43,107	59,333	8,666	32,167	10,898
利息及び配当金の受取額	Interest and Dividends Received in Cash	2,520	1,262	1,710	2,181	3,105	1,044
利息の支払額	Interest Paid	(1,449)	(1,306)	(955)	(432)	(871)	(424)
法人税等の支払額又は還付額(支払額)	Income taxes (paid) refund	(8,850)	(255)	(7,032)	(5,480)	(8,338)	(4,229)
営業活動によるキャッシュ・フロー	Net Cash Provided by (Used In) Operating Activities	22,639	42,807	53,056	4,934	26,063	7,288

連結キャッシュ・フロー計算書

Consolidated Cash Flow Statements

百万円/ Million ¥

		09/3	10/3	11/3	11/9	12/3	12/9
投資活動によるキャッシュ・フロー	Investing Activities						
定期預金の増減額	(Increase) Decrease in Time Deposits	(124)	107	327	(82)	(99)	93
有形固定資産の取得による支出	Capital Expenditures	(28,659)	(16,321)	(18,616)	(10,874)	(19,164)	(11,781)
有形固定資産の売却による収入	Proceeds from Sales of Property, Plant and Equipment	462	195	152	32	774	520
無形固定資産の増減額	(Increase) Decrease in Intangible Fixed Assets	(1,366)	(524)	(719)	(473)	(944)	(351)
投資有価証券の増減額	(Increase) Decrease in Investments in Securities	(31)	(857)	(46)	(5,815)	(8,174)	(1,673)
貸付金の増減額	(Increase) Decrease in Loans Receivable	839	(530)	266	731	(195)	(1,549)
その他	Others	(423)	153	(1,390)	(1,441)	673	(226)
投資活動によるキャッシュ・フロー	Net Cash Used in Investing Activities	(29,303)	(17,777)	(20,025)	(17,923)	(27,130)	(14,968)
財務活動によるキャッシュ・フロー	Financing Activities						
短期借入金の増減額	Increase (Decrease) in Short-Term Debt	9,877	(12,366)	(6,001)	2,116	920	51
長期借入金の増減額	Increase (Decrease) in Long-Term Debt	10,923	(7,637)	(10,241)	5,046	(2,064)	(2,923)
社債・ＣＰの発行による収入	Proceeds from issuance of corporate bond and commercial papers	3,000	9,000	22,000	16,000	25,000	12,000
社債・ＣＰの償還による支出	Redemption of corporate bond and commercial papers	—	(9,000)	(12,000)	(6,000)	(12,000)	(12,000)
自己株式取得による支出	Treasury Stock	(3,855)	(91)	(2,661)	(9)	(9)	(0)
リース債務の返済による支出	Repayment of lease obligation	(481)	(555)	(820)	(402)	(642)	(306)
配当金の支払額	Dividends Paid	(3,355)	(1,670)	(3,297)	(1,873)	(3,527)	(1,890)
少数株主への配当金の支払額	Dividends Paid to Minority Interests	(206)	(150)	(186)	(111)	(298)	(147)
その他	Others	(94)	6	(122)	27	1,967	151
財務活動によるキャッシュ・フロー	Net Cash Provided by (Used In) Financing Activities	15,806	(22,465)	(13,330)	14,793	9,347	(5,065)
現金及び現金同等物に係る換算差額	Effect of Exchange Rate Changes on Cash and Equivalents	(3,353)	549	(2,256)	(1,256)	(1,861)	5
現金及び現金同等物の増減額	Net Increase (Decrease) in Cash and Cash Equivalents	5,788	3,113	17,442	547	6,418	(12,739)
現金及び現金同等物の期首残高	Cash and Cash Equivalents at Beginning of Year	26,394	32,253	35,379	52,934	52,934	58,773
新規連結による現金及び現金同等物増加額	Increase in Cash and Cash Equivalents Accompanying Consolidation	—	99	—	—	—	2,467
連結子会社と非連結子会社との合併に伴う現金及び現金同等物の増加額	Increase in cash and cash equivalents resulting from merger of subsidiaries and merger with unconsolidated subsidiaries	69	—	—	—	—	—
連結子会社の決算期変更に伴う現金及び現金同等物の増減額	Increase (Decrease) in cash and cash equivalents resulting from changes in fiscal year end of consolidated subsidiaries	—	(86)	112	(579)	(579)	—
現金及び現金同等物の期末残高	Cash and Cash Equivalents at End of Year	32,253	35,379	52,934	52,903	58,773	48,501

収支状況 Income and Expenditures

1. 連結損益計算書 Consolidated Income Statement

百万円/Million ¥

	実績	実績	予想
	Actual	Actual	Forecast
	11/3	12/3	13/3
売上高 Net Sales	456,198	440,752	510,000
営業利益 Operating Income	32,757 7.2%	22,493 5.1%	30,000 5.9%
経常利益 Ordinary Income	33,407 7.3%	23,884 5.4%	31,000 6.1%
当期純利益 Net Income	19,420	16,741	20,000
1株当たり利益 EPS	82.44	71.47	82.33

2. 連結貸借対照表 Consolidated Balance Sheet

百万円/Million ¥

	実績	実績	予想
	Actual	Actual	Forecast
	11/3	12/3	13/3
流動資産 Current Assets	180,996	212,907	202,700
有形固定資産 Property, Plant and Equipment, Net	121,544	117,178	129,000
投資等 Total Investments, Long-Term Receivables and Other Assets	53,507	63,610	62,000
総資産 Total Assets	356,048	393,695	393,700
有利子負債 Interest-Bearing Debt	58,964	71,003	75,000
その他負債 Other Liabilities	143,339	155,952	138,000
少数株主持分 Minority Interests	10,940	11,827	9,374
自己資本 Stockholders' Equity	142,804	154,911	171,326
負債・純資産計 Total Liabilities and Net Assets	356,048	393,695	393,700

ROE ※1	14.0%	11.2%	12.3%
ROA ※2	9.4%	6.4%	7.9%

※1) ROE = 当期利益 ÷ [(当期末純資産 + 前期末純資産) ÷ 2] × 100

※1) ROE = Net Income ÷ [(Net Assets of End of Year + Net Assets of Beginning of Year) ÷ 2] × 100

※2) ROA = 経常利益 ÷ [(当期末総資産 + 前期末総資産) ÷ 2] × 100

※2) ROA = Ordinary Income ÷ [(Total Assets of End of Year + Total Assets of Beginning of Year) ÷ 2] × 100

3. 分野別セグメント

Segment Information by Business Group

		百万円/Million ¥		
		実績	実績	予想
		Actual	Actual	Forecast
		11/3	12/3	13/3
懸架ばね事業	Automotive Suspension Spring Unit			
売上高	Net Sales	91,206	90,334	100,000
営業利益	Operating Income	7,168	6,814	9,000
利益率	Operating Margin	7.9%	7.5%	9.0%
シート事業	Automotive Seating Unit			
売上高	Net Sales	181,426	175,714	210,000
営業利益	Operating Income	9,842	8,134	13,000
利益率	Operating Margin	5.4%	4.6%	6.2%
精密部品事業	Precision Spring & Components Unit			
売上高	Net Sales	113,306	99,961	126,000
営業利益	Operating Income	11,818	3,508	4,100
利益率	Operating Margin	10.4%	3.5%	3.3%
産業機器ほか事業	Industry & Others			
売上高	Net Sales	70,259	74,742	74,000
営業利益	Operating Income	3,927	4,036	3,900
利益率	Operating Margin	5.6%	5.4%	5.3%
連結	Consolidated			
売上高	Net Sales	456,198	440,752	510,000
営業利益	Operating Income	32,757	22,493	30,000
利益率	Operating Margin	7.2%	5.1%	5.9%

4. 所在地別セグメント

Segment Information by Location

		百万円/Million ¥		
		実績	実績	予想
		Actual	Actual	Forecast
		11/3	12/3	13/3
日本	Japan			
売上高	Net Sales	309,200	313,677	336,626
営業利益	Operating Income	17,678	15,809	18,000
利益率	Operating Margin	5.7%	5.0%	5.3%
北米	North America			
売上高	Net Sales	43,430	39,711	54,771
営業利益	Operating Income	1,657	383	2,000
利益率	Operating Margin	3.8%	1.0%	3.7%
アジア	Asia			
売上高	Net Sales	103,567	87,363	118,602
営業利益	Operating Income	13,421	6,299	10,000
利益率	Operating Margin	12.9%	7.2%	8.4%
連結	Consolidated			
売上高	Net Sales	456,198	440,752	510,000
営業利益	Operating Income	32,757	22,493	30,000
利益率	Operating Margin	7.2%	5.1%	5.9%