

FINANCIAL FACT BOOK 2013/2014

(目次 / CONTENTS)	(頁 / PAGE)
〔連結決算 / Consolidated Statements〕	(1 - 17)
経営成績 (売上高、U S \$ 建て売上高、為替レート、利益、収益性) Operating Results (Net Sales, Net Sales on U. S. Dollar-Basis, Exchange rate, Income, and Profitability)	1 - 5
財政状態 (総資産、自己資本、有利子負債) Financial Condition (Total Assets, Stockholders' Equity, and Interest-Bearing Debt)	6 - 7
セグメント情報 (事業の種類別、所在地別、地域別売上高) Segment Information (by Business Group, by Location, and Sales by Region)	8 - 10
設備投資、減価償却費、営業キャッシュ・フロー Capital Expenditures, Depreciation & Amortization, Operating Cash Flows	11
研究開発費 Research & Development	12
連結対象会社数 Number of Consolidated Subsidiaries	12
連結貸借対照表 Consolidated Balance Sheets	13 - 14
連結損益計算書 Consolidated Income Statements	15
連結キャッシュ・フロー計算書 Consolidated Cash Flow Statements	16 - 17

FINANCIAL FACT BOOK 2013/2014

(目次 / CONTENTS)

(頁 / PAGE)

[2014年3月期予想要約 / Forecast Summary for the Period Ending March 2014]	(18 - 19)
収支状況 (連結損益計算書、連結貸借対照表) Income and Expenditures (Consolidated Income Statements and Consolidated Balance Sheets)	18
ROE・ROA (連結) ROE and ROA (Consolidated)	18
セグメント情報(分野別、所在地別) Segment Information (by Business Group, by Location)	19

[注記]

業績見通しには、現時点で入手可能な情報と当社の今後の計画等の将来予測が含まれています。国内外の経済事情、為替レート等不確実な要因の状況変化によって、実際の業績が見通しとは大きく異なる可能性があることをご承知おきください。

[Notes]:

These earnings forecasts include information that was currently available at the time and predictions of our company's future plans. Please be aware that actual results may differ greatly from these forecasts because of changes in uncertain factors such as international and domestic economic information and exchange rates.

2013年11月26日
Nov 26, 2013

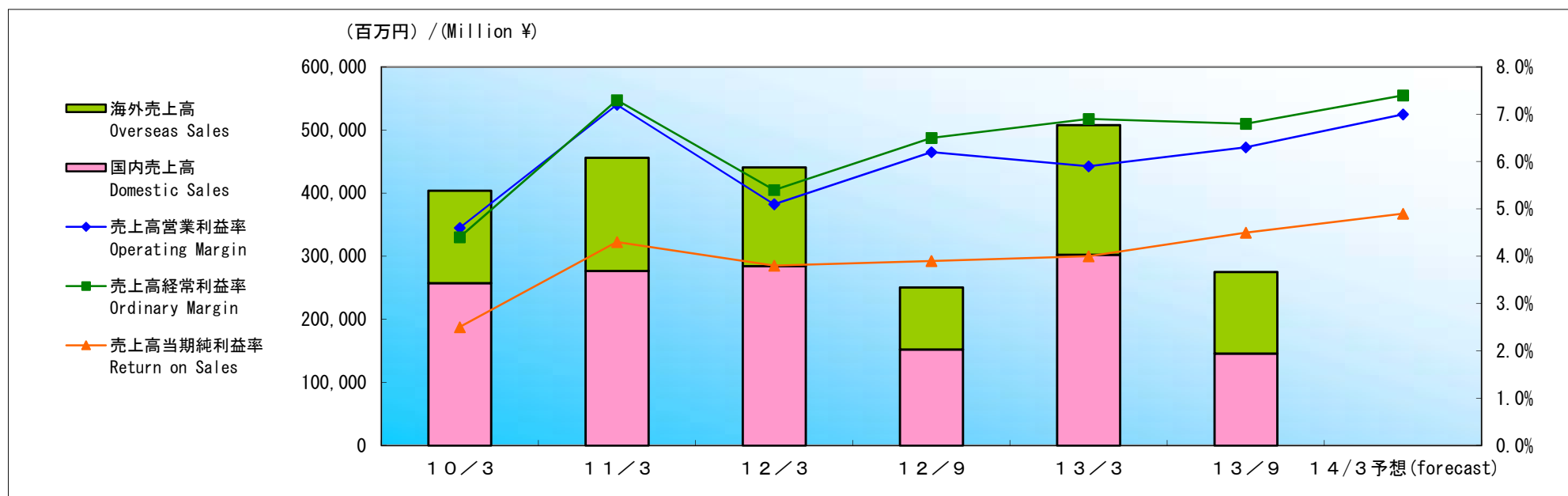
日本発条株式会社
NHK Spring Co., Ltd.

経営成績

Financial Data

(1) 売上高

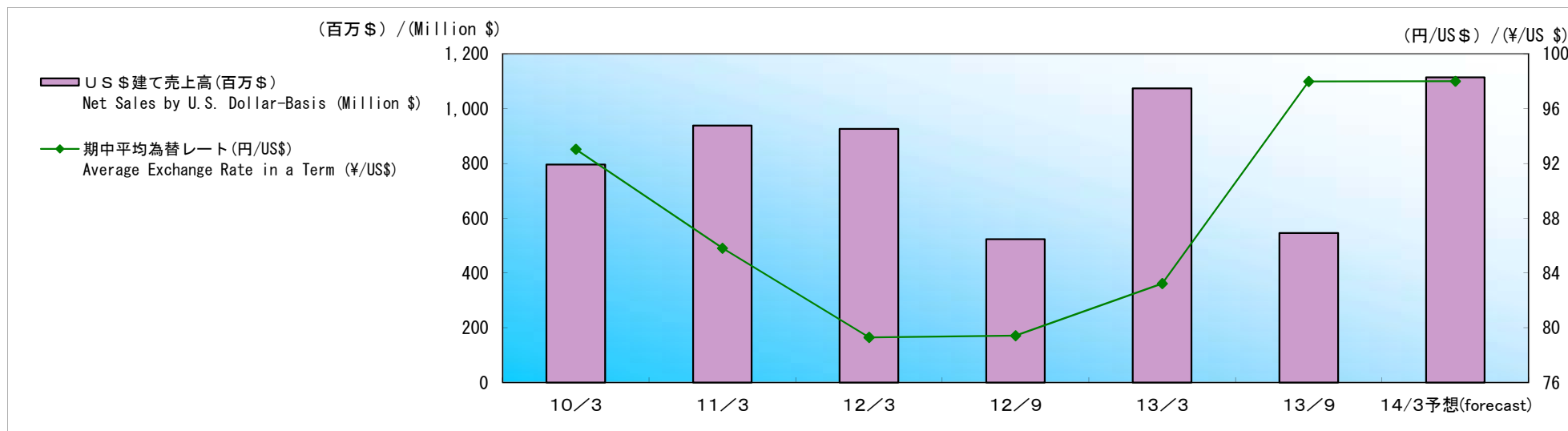
Net Sales



		百万円 / Million ¥						
		10/3	11/3	12/3	12/9	13/3	13/9	14/3 予想 (forecast)
売上高	Net Sales	404,143	456,198	440,752	250,685	507,985	275,224	570,000
前年比	Year-over-Year	(8.3%)	12.9%	(3.4%)	23.5%	15.3%	9.8%	12.2%
国内売上高	Domestic Sales	257,303	276,816	284,219	152,311	302,268	145,680	-
前年比	Year-over-Year	(7.4%)	7.6%	2.7%	19.5%	6.4%	(4.4%)	-
海外売上高	Overseas Sales	146,839	179,381	156,533	98,374	205,716	129,544	-
前年比	Year-over-Year	(10.0%)	22.2%	(12.7%)	30.2%	31.4%	31.7%	-
売上高営業利益率	Operating Margin	4.6%	7.2%	5.1%	6.2%	5.9%	6.3%	7.0%
売上高経常利益率	Ordinary Margin	4.4%	7.3%	5.4%	6.5%	6.9%	6.8%	7.4%
売上高当期純利益率	Return on Sales	2.5%	4.3%	3.8%	3.9%	4.0%	4.5%	4.9%

(2) US\$建て売上高、為替レート

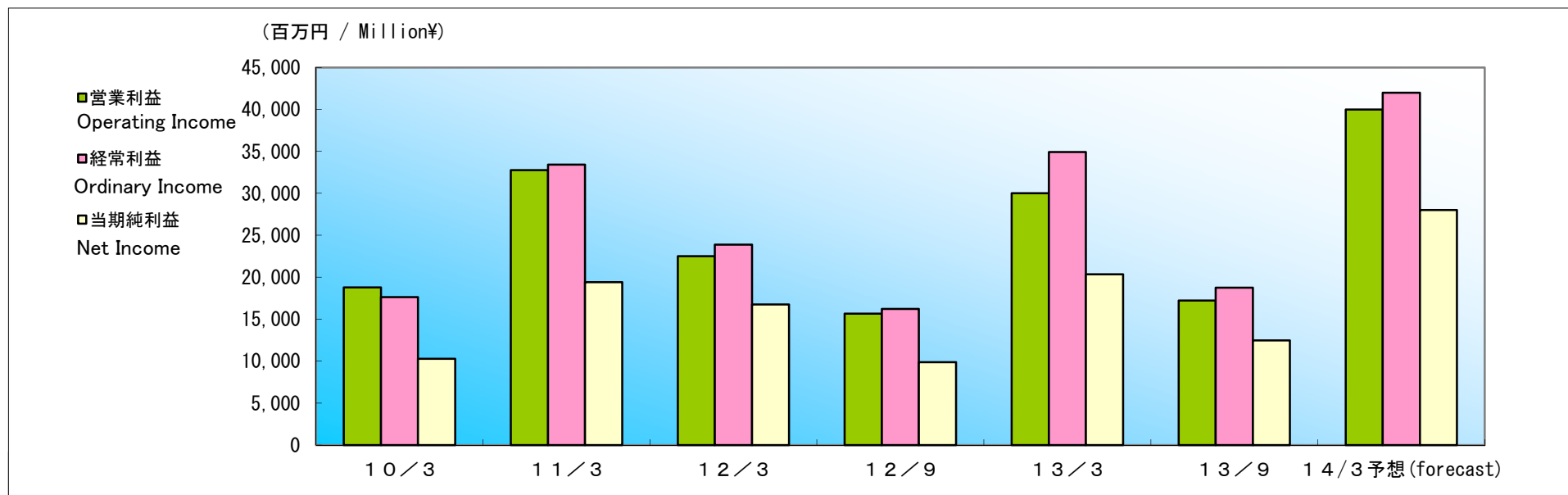
Net Sales on U.S. Dollar-Basis, Exchange rate



		10/3	11/3	12/3	12/9	13/3	13/9	14/3予想(forecast)
期中平均為替レート(円/US\$)	Average Exchange Rate in a Term (¥/US\$)	93	86	79	79	83	98	98
U.S. \$建て売上高(百万\$)	Net Sales by U.S. Dollar-Basis (Million \$)	796	938	926	523	1,074	546	1,114
前年比	Year-over-Year	9.6%	17.9%	(1.3%)	26.6%	16.0%	4.5%	3.7%

(3) 利益

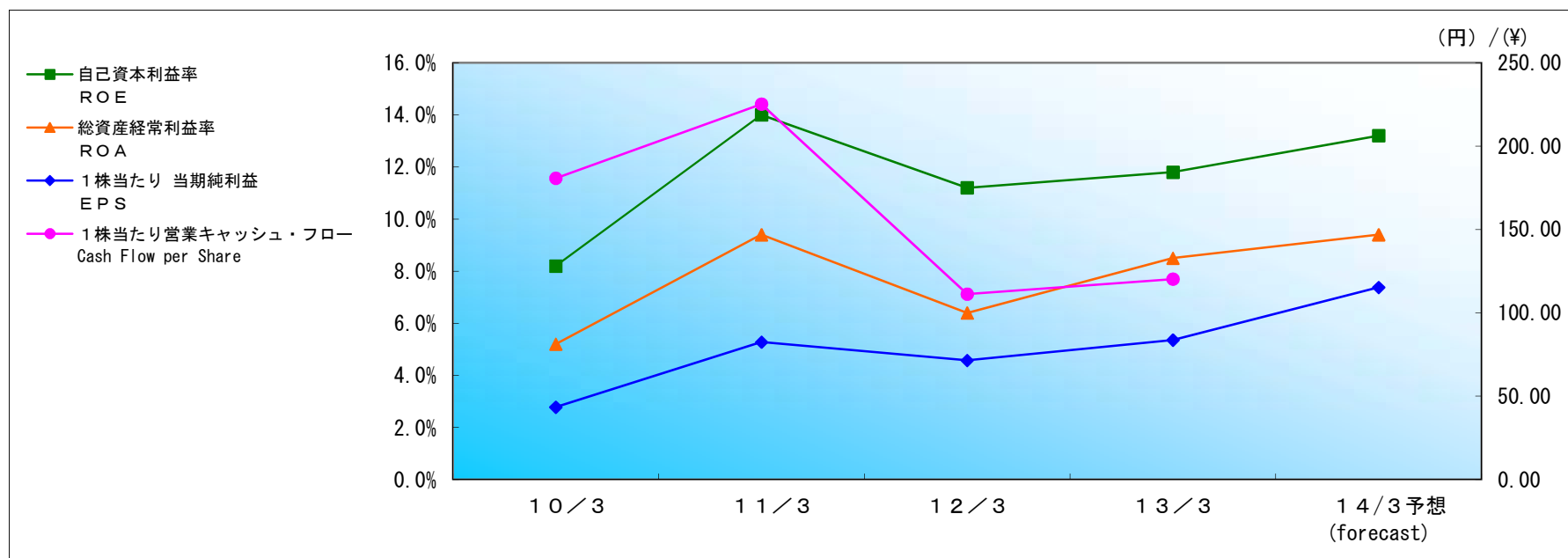
Income



		百万円 / Million¥						
		10/3	11/3	12/3	12/9	13/3	13/9	14/3 予想 (forecast)
営業利益	Operating Income	18,785	32,757	22,493	15,644	30,020	17,210	40,000
前年比	Year-over-Year	79.6%	74.4%	(31.3%)	90.7%	33.5%	10.0%	33.2%
経常利益	Ordinary Income	17,631	33,407	23,884	16,229	34,907	18,767	42,000
前年比	Year-over-Year	36.4%	89.5%	(28.5%)	97.5%	46.2%	15.6%	20.3%
当期純利益	Net Income	10,290	19,420	16,741	9,876	20,333	12,472	28,000
前年比	Year-over-Year	95.6%	88.7%	(13.8%)	72.6%	21.5%	26.3%	37.7%

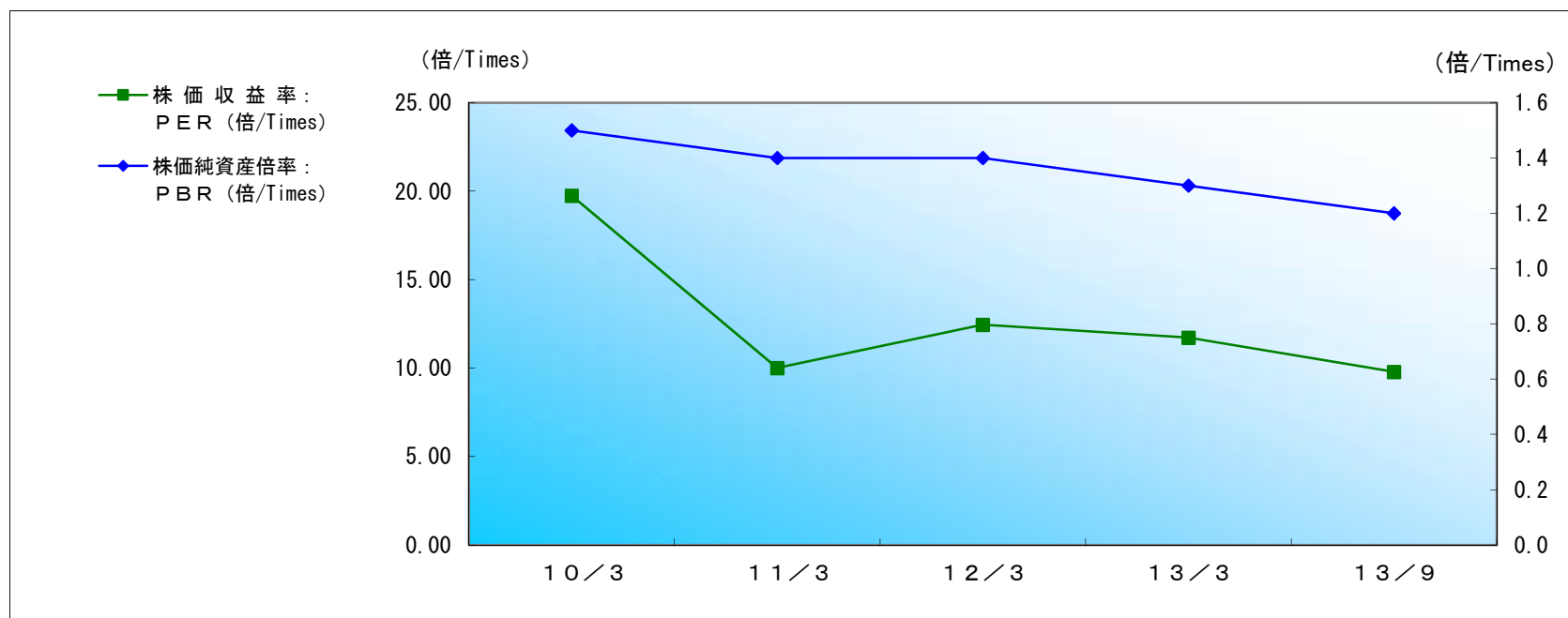
(4) 収益性/ Profitability

①自己資本利益率(ROE)、総資産経常利益率(ROA)、1株当たり当期純利益(EPS) 他



		(円)/(円)				
		10/3	11/3	12/3	13/3	14/3 予想 (forecast)
自己資本利益率	ROE	8.2%	14.0%	11.2%	11.8%	13.2%
総資産経常利益率	ROA	5.2%	9.4%	6.4%	8.5%	9.4%
1株当たり 当期純利益	EPS	43.45	82.44	71.47	83.70	115.28
1株当たり営業キャッシュ・フロー	Cash Flow per Share	180.75	225.24	111.27	120.29	-

②株価収益率(PE R)、株価純資産倍率(PBR)、株価営業キャッシュ・フロー倍率(PCFR)



	10/3	11/3	12/3	13/3	13/9
期末日株価(円) : Closing Share Price at Fiscal Year End (¥)	858	824	890	981	1,004
株価収益率: PE R (倍/Times)	19.75	10.00	12.45	11.72	9.78
株価営業キャッシュ・フロー倍率(倍/Times) : Price Operating Cash Flow Ratio	4.7	3.7	8.0	8.2	6.5
株価純資産倍率: PBR (倍/Times)	1.5	1.4	1.4	1.3	1.2

13/9 株価収益率は、第2四半期連結累計期間の1株当たり純利益(51.35円)×2を使用

13/9 PER; EPS (¥51.35) in the 1st half × 2

13/9 株価営業キャッシュ・フロー倍率は、第2四半期連結累計期間の1株当たり営業キャッシュ・フロー(77.26円)×2を使用

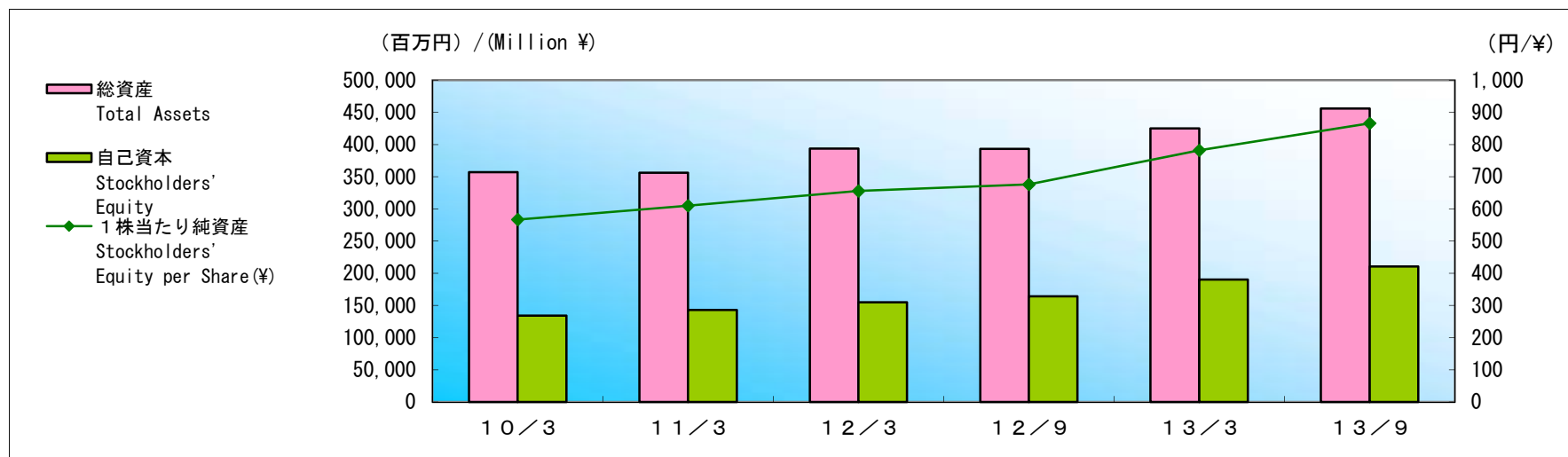
13/9 Price Operating Cash Flow Ratio; Cash Flow Per Share (¥77.26) in the 1st half × 2

財政状態

Financial Condition

(1) 総資産、自己資本、自己資本比率、1株当たり純資産

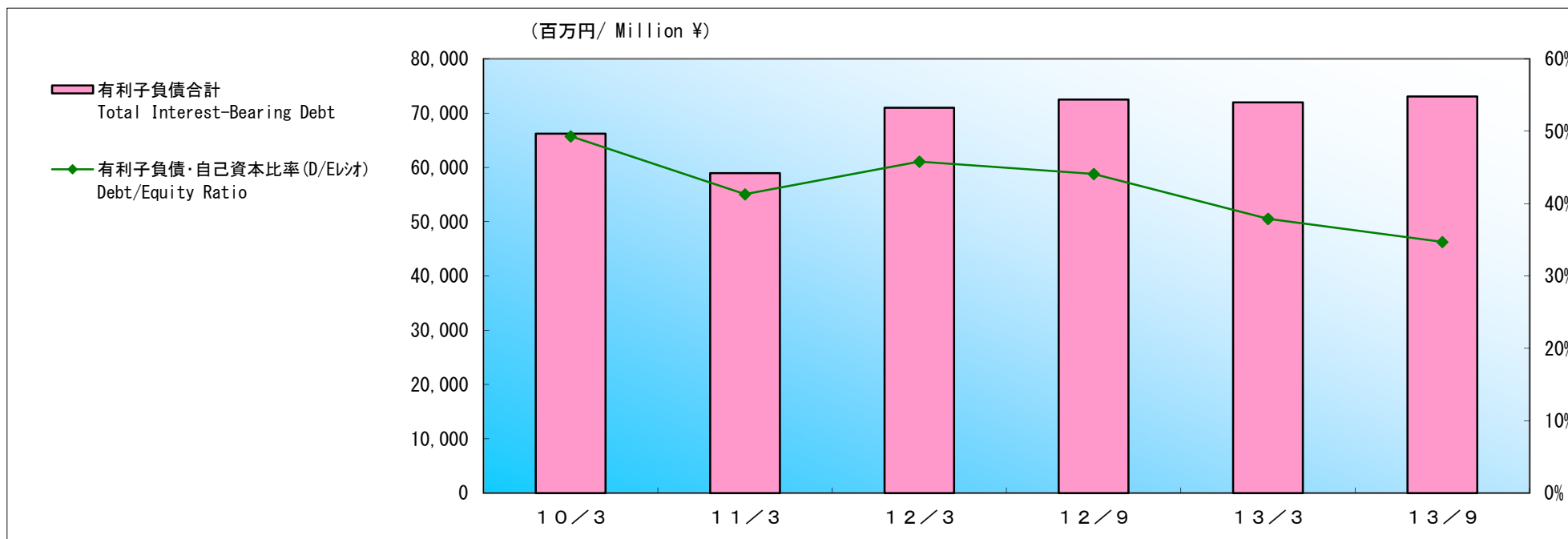
Total Assets, Stockholders' Equity, Stockholders' Equity Ratio, Stockholders' Equity per Share



		百万円/Million ¥					
		10/3	11/3	12/3	12/9	13/3	13/9
総資産	Total Assets	357,141	356,048	393,695	393,004	425,050	455,713
自己資本	Stockholders' Equity	134,242	142,804	154,911	164,234	190,000	210,342
自己資本比率	Stockholders' Equity to Total Assets Ratio	37.6%	40.1%	39.3%	41.8%	44.7%	46.2%
1株当たり純資産	Stockholders' Equity per Share(¥)	567.01	610.07	655.86	676.15	782.23	865.98

(2) 有利子負債、有利子負債・自己資本比率(D/Eレシオ)

Interest-Bearing Debt, Debt/Equity Ratio

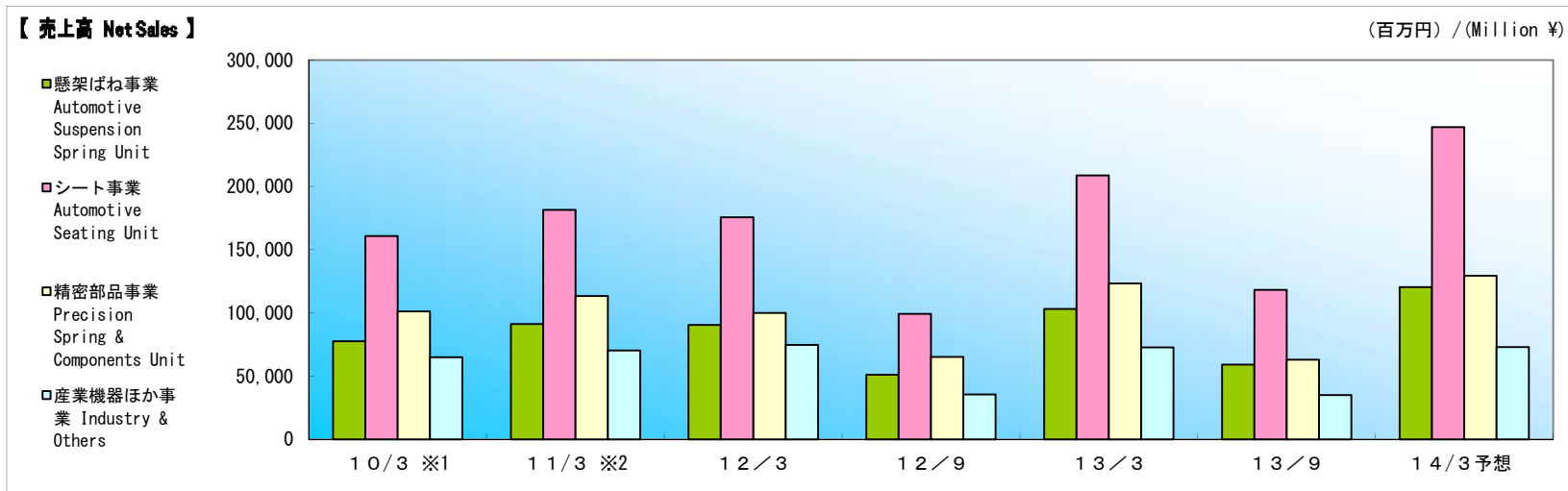


		百万円/ Million ¥					
		10/3	11/3	12/3	12/9	13/3	13/9
短期借入金	Short-Term Debt	20,073	19,512	25,077	27,376	26,646	32,268
長期借入金	Long-Term Debt	48,203	37,296	37,139	41,039	45,057	53,205
(うち一年以内返済)	(Due Within One Year)	(15,617)	(12,841)	(13,057)	(15,321)	(15,959)	(15,346)
内部取引の消去	Intersegment Sales	(5,050)	(10,845)	(17,213)	(21,922)	(29,745)	(42,386)
借入金合計	Total Borrowings	63,227	45,964	45,003	46,493	41,958	43,087
社債	Corporate Bond	-	10,000	20,000	20,000	20,000	20,000
コマーシャル・ペーパー	Commercial Paper	3,000	3,000	6,000	6,000	10,000	10,000
有利子負債合計	Total Interest-Bearing Debt	66,227	58,964	71,003	72,493	71,958	73,087
有利子負債・自己資本比率(D/Eレシオ)	Debt/Equity Ratio	49.3%	41.3%	45.8%	44.1%	37.9%	34.7%
純有利子負債合計	Net interest-Bearing Debt	30,205	5,663	11,786	23,619	14,821	10,912

セグメント情報

Segment Information

(1) 事業の種類別セグメント情報



		10/3 ※1	11/3 ※2	12/3	12/9	13/3	13/9	14/3 予想 (forecast)
売上高:	懸架ばね事業 Automotive Suspension Spring Unit	77,462	91,206	90,334	50,928	103,213	59,002	120,500
Net Sales	シート事業 Automotive Seating Unit	160,740	181,426	175,714	99,194	208,773	118,307	247,000
	精密部品事業 Precision Spring & Components Unit	101,073	113,306	99,961	65,191	123,373	62,983	129,500
	産業機器ほか事業 Industry & Others	64,866	70,259	74,742	35,371	72,625	34,931	73,000
	連結 Consolidated	404,143	456,198	440,752	250,685	507,985	275,224	570,000
セグメント利益:								
(営業利益)	懸架ばね事業 Automotive Suspension Spring Unit	517	7,168	6,814	4,954	10,245	6,931	13,900
Segment Profit (Operating Income)	シート事業 Automotive Seating Unit	6,539	9,842	8,134	6,574	13,543	6,177	16,000
	精密部品事業 Precision Spring & Components Unit	9,252	11,818	3,508	2,426	2,919	2,647	6,100
	産業機器ほか事業 Industry & Others	2,475	3,927	4,036	1,689	3,312	1,454	4,000
	連結 Consolidated	18,785	32,757	22,493	15,644	30,020	17,210	40,000

※1 2010年度からセグメント区分を変更しております。2010年3月期の新セグメントの数字は、比較を可能にするため組み替えたもので、未監査の数字です。
 ※1 From FY 2010, the company have reviewed segment category. The figure for FY 2009 are restsed based on new segment category (unaudited).

※2 2011年度から全社費用等を各セグメントに配賦しております。2011年3月期の数字は、比較を可能にするため全社費用等を配賦したもので、未監査の数字です。
 ※2 From FY 2011, the company have allocated adjustment to each segment category. The figure for FY 2010 are restsed based on new allocation (unaudited).

(2) 所在地別セグメント

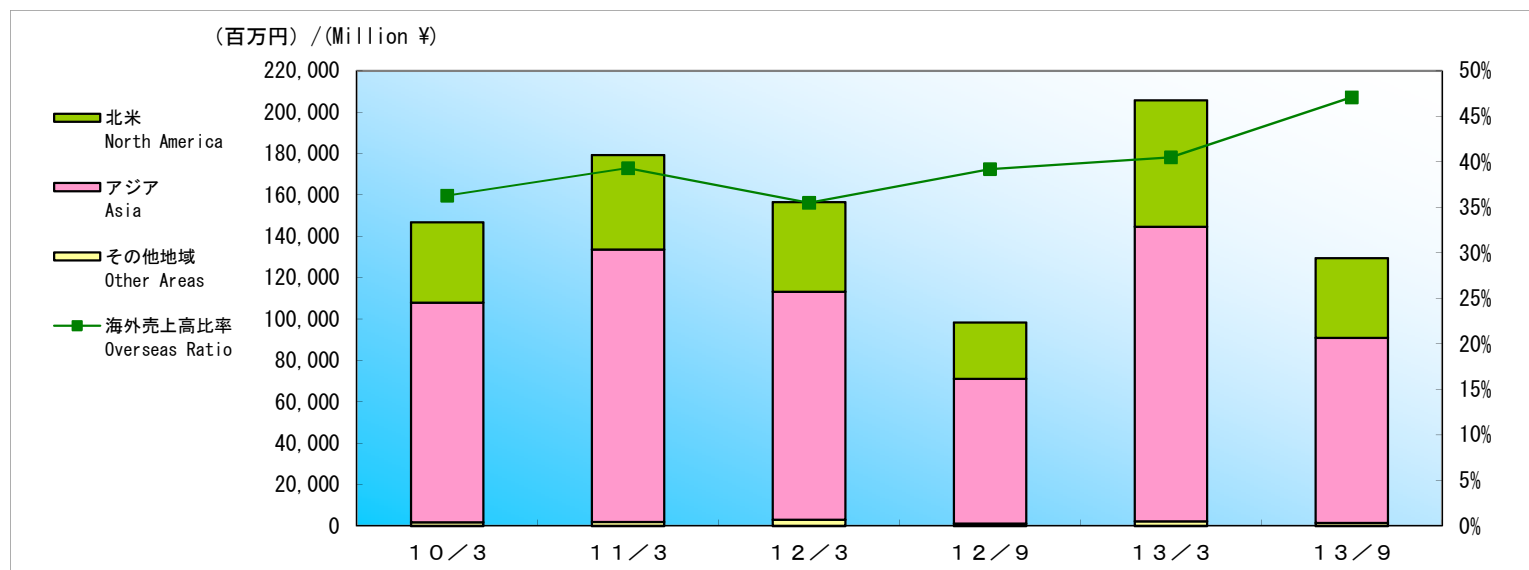
Segment by Location

			百万円/ Million ¥						
			10/3	11/3	12/3	12/9	13/3	13/9	14/3 予想 (forecast)
売上高 :	日本 :	Japan							
Net Sales	対外部顧客	For Customers	288,589	309,200	313,677	169,055	333,230	161,849	340,709
	セグメント間	Intersegment	15,814	17,444	20,376	7,987	15,670	9,353	14,291
	計	Total	304,403	326,645	334,054	177,042	348,901	171,203	355,000
	北米 :	North America							
	対外部顧客	For Customers	37,239	43,430	39,711	24,662	56,951	35,716	73,825
	セグメント間	Intersegment	259	259	276	163	320	37	75
	計	Total	37,498	43,690	39,988	24,825	57,272	35,753	73,900
	アジア :	Asia							
	対外部顧客	For Customers	78,313	103,567	87,363	56,967	117,803	77,658	155,466
	セグメント間	Intersegment	1,152	1,384	1,338	536	1,587	1,214	2,434
	計	Total	79,465	104,951	88,702	57,503	119,391	78,872	157,900
	消去	Intersegment Sales	(17,225)	(19,088)	(21,992)	(8,686)	(17,579)	(10,605)	(16,800)
	連結	Consolidated	404,143	456,198	440,752	250,685	507,985	275,224	570,000
営業利益 :	日本	Japan	9,708	17,678	15,809	9,311	17,930	9,506	23,000
Operating Income	北米	North America	622	1,657	383	848	2,084	1,053	2,500
	アジア	Asia	8,455	13,421	6,299	5,484	10,005	6,649	14,500
	連結	Consolidated	18,785	32,757	22,493	15,644	30,020	17,210	40,000

※2011年3月期、2012年3月期、2012年9月期、2013年3月期及び2013年9月期の所在地別セグメントは比較を可能とするため記載しており未監査の数字です。

※Segment by location results for FY2010, FY2011, the Second Quarter 2012, FY2012, and the Second Quarter 2013 which indicated in order to make comparison possible, was exempt from Quarterly review (audit).

(3) 地域別売上高 Sales by Region

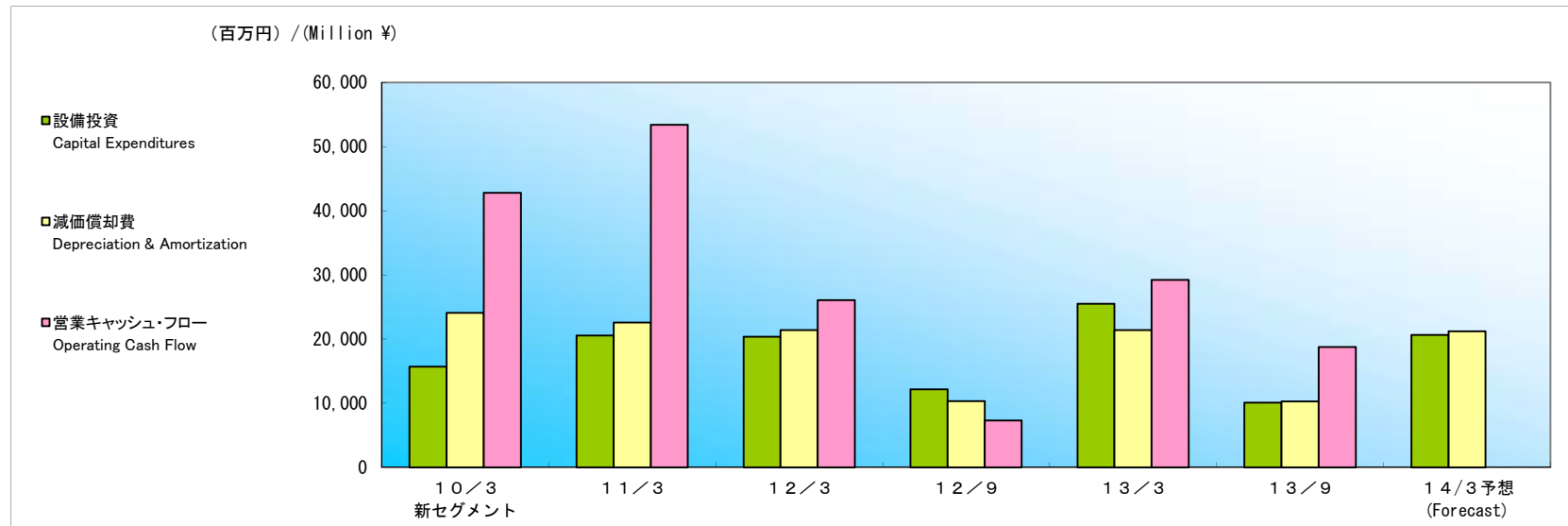


		百万円/ Million ¥						
		10/3	11/3	12/3	12/9	13/3	13/9	
北米	売上高	Net Sales	38,924	45,760	43,353	27,229	61,060	38,562
North America	構成比	Composition	9.6%	10.0%	9.8%	10.9%	12.0%	14.0%
	前年比	Year-over-Year	(19.0%)	17.6%	(5.3%)	52.9%	40.8%	41.6%
アジア	売上高	Net Sales	106,105	131,639	110,102	70,001	142,366	89,567
Asia	構成比	Composition	26.3%	28.9%	25.0%	27.9%	28.0%	32.5%
	前年比	Year-over-Year	(4.9%)	24.0%	(16.4%)	23.3%	29.3%	28.0%
その他地域	売上高	Net Sales	1,809	1,981	3,077	1,143	2,290	1,414
Other Areas	構成比	Composition	0.4%	0.4%	0.7%	0.5%	0.5%	0.5%
	前年比	Year-over-Year	(48.7%)	9.5%	55.3%	19.8%	(25.6%)	23.7%
海外売上高合計		Overseas Total	146,839	179,381	156,533	98,374	205,716	129,544
海外売上高比率		Overseas Ratio	36.3%	39.3%	35.5%	39.2%	40.5%	47.1%

※2011年3月期、2012年3月期、2012年9月期、2013年3月期及び2013年9月期の地域別売上高は比較を可能とするため記載しており未監査の数字です。
 ※Sales by Region results for FY2010, FY2011, the Second Quarter 2012, FY2012 and the Second Quarter 2013 which indicated in order to make comparison possible, was exempt from Quarterly review (audit).

設備投資、減価償却費、営業キャッシュ・フロー

Capital Expenditures, Depreciation & Amortization, Operating Cash Flows



百万円/ Million ¥

		10/3 新セグメント	11/3	12/3	12/9	13/3	13/9	14/3 予想 (Forecast)
設備投資	Capital Expenditures	15,695	20,538	20,370	12,133	25,506	10,063	20,624
前年比	Year-over-Year	(54.9%)	30.9%	(0.8%)	17.8%	25.2%	(17.1%)	(19.1%)
減価償却費	Depreciation & Amortization	24,074	22,584	21,371	10,321	21,393	10,253	21,224
前年比	Year-over-Year	(9.5%)	(6.2%)	(5.4%)	10.4%	0.1%	(0.7%)	(0.8%)
営業キャッシュ・フロー	Operating Cash Flow	42,807	53,409	26,063	7,288	29,222	18,767	-
前年比	Year-over-Year	89.1%	23.9%	(51.2%)	47.7%	12.1%	157.5%	-

* 事業セグメント別設備投資・減価償却費内訳 Capital Expenditure, Depreciation & Amortization by Sales Composition

懸架ばね事業 Automotive Suspension Spring Unit	設備投資 Capital Expenditures	2,305	2,498	4,159	2,641	4,778	2,536	5,961
	減価償却費 Depreciation & Amortization	5,031	4,676	4,128	1,983	4,158	2,130	4,570
シート事業 Automotive Seating Unit	設備投資 Capital Expenditures	3,312	5,744	5,330	3,352	7,245	1,535	3,827
	減価償却費 Depreciation & Amortization	5,880	4,975	4,665	2,222	4,784	2,399	4,535
精密部品事業 Precision Spring & Components Unit	設備投資 Capital Expenditures	9,161	10,763	9,487	5,453	11,016	5,159	9,087
	減価償却費 Depreciation & Amortization	11,437	11,273	10,631	5,200	10,475	4,714	9,832
産業機器ほか事業 Industry & Others	設備投資 Capital Expenditures	916	1,532	1,392	685	2,466	832	1,748
	減価償却費 Depreciation & Amortization	1,724	1,639	1,946	916	1,975	1,008	2,286

※2010年度からセグメント区分を変更しております。2010年3月期の新セグメントの数字は、比較を可能にするため組み替えて表示しております。

※From FY 2010, the company have reviewed segment category. The figure for FY 2009 is restsed based on new segment category for comparison.

研究開発費

Research & Development

		百万円/ Million ¥				
		1 1 / 3	1 2 / 3	1 3 / 3	1 3 / 9	1 4 / 3 予想 (forecast)
研究開発費	Research & Development (Million ¥)	9,786	10,055	11,750	6,433	13,530
売上高比率	R&D per Sales Ratio	2.1%	2.3%	2.3%	2.3%	2.4%

連結対象会社数

Number of Consolidated Subsidiaries

		1 1 / 3	1 2 / 3	1 2 / 9	1 3 / 3	1 3 / 9
連結子会社 :	Consolidated Subsidiaries					
国内	Domestic	15	16	17	17	17
海外	Overseas	12	13	13	14	15
計	Total	27	29	30	31	32
持分法適用会社 :	Affiliated Companies					
国内	Domestic	6	6	5	5	5
海外	Overseas	3	2	2	2	5
計	Total	9	8	7	7	10

連結貸借対照表 Consolidated Balance Sheets

百万円/ Million ¥

資産の部	Assets	10/3	11/3	12/3	12/9	13/3	13/9
流動資産	Current Assets						
現金及び預金	Cash and Bank Deposits	36,021	53,300	59,217	48,873	57,137	62,175
受取手形及び売掛金	Notes and Accounts Receivable, Trade	88,337	77,950	101,631	104,123	109,535	116,718
たな卸資産	Inventories	30,699	31,998	33,072	35,804	35,235	38,044
繰延税金資産	Deferred Income Taxes	4,510	4,674	3,992	4,079	4,296	3,798
その他	Other Current Assets	14,220	13,424	15,171	14,994	15,773	18,017
貸倒引当金	Allowance for Doubtful Receivables	(74)	(351)	(177)	(137)	(63)	(60)
流動資産合計	Total Current Assets	173,714	180,996	212,907	207,737	221,914	238,693
固定資産	Noncurrent Assets						
有形固定資産	Property, Plant and Equipment, Net						
建物及び構築物	Buildings and Structures	44,232	41,039	40,440	42,474	42,890	46,605
機械装置及び運搬具	Machinery and Equipment	40,351	36,074	33,569	36,371	38,222	39,580
土地	Land	28,393	29,866	28,871	30,650	31,713	32,107
リース資産	Lease Assets	4,180	3,389	2,842	2,751	1,917	1,563
建設仮勘定	Construction in Progress	3,324	5,543	6,183	6,164	7,469	8,840
その他	Others	5,761	5,631	5,271	5,819	6,627	6,980
有形固定資産合計	Total Property, Plant and Equipment, Net	126,245	121,544	117,178	124,230	128,841	135,678
無形固定資産	Goodwill and Intangible Assets						
のれん	Goodwill	367	-	-	244	228	525
その他	Others	2,426	2,383	2,797	3,088	3,460	4,548
無形固定資産合計	Total Goodwill and Intangible Assets	2,794	2,383	2,797	3,333	3,689	5,073
投資その他の資産	Investments, Long-Term Receivables and Other Assets						
投資有価証券	Investment Securities	48,244	44,041	48,261	39,548	53,470	60,601
長期貸付金	Long-Term Loans	614	439	1,047	3,182	3,988	3,021
繰延税金資産	Deferred Income Taxes	2,055	2,319	3,206	3,784	3,316	3,695
その他	Other Investments	3,849	4,908	8,464	11,358	9,984	9,093
貸倒引当金	Allowance for Doubtful Receivables	(376)	(584)	(168)	(171)	(154)	(144)
投資その他の資産合計	Total Investments, Long-Term Receivables and Other Assets	54,387	51,123	60,812	57,702	70,604	76,268
固定資産合計	Total Noncurrent Assets	183,426	175,051	180,788	185,266	203,135	217,020
資産合計	Total Assets	357,141	356,048	393,695	393,004	425,050	455,713

連結貸借対照表

Consolidated Balance Sheets

百万円/ Million ¥

負債及び純資産の部	Liabilities and Net Assets	10/3	11/3	12/3	12/9	13/3	13/9
負債の部	Liabilities						
流動負債	Current Liabilities						
支払手形及び買掛金	Notes and Accounts Payable	94,229	91,255	77,904	69,589	69,601	74,484
電子記録債務	Electronically Recorded Obligations	-	-	29,953	28,513	25,417	26,691
短期借入金	Bank Loans	30,641	21,509	22,581	24,123	20,242	18,809
未払法人税等	Income Taxes	3,143	5,310	3,422	3,328	6,381	4,831
繰延税金負債	Deferred Income Taxes	906	1,076	768	775	834	809
役員賞与引当金	Allowance for Directors' Bonuses	180	190	229	125	260	123
設備支払手形	Equipment Notes Payable	354	536	2,089	2,184	2,584	2,133
その他	Others	23,960	24,663	26,806	28,746	34,705	36,440
流動負債合計	Total Current Liabilities	153,415	144,542	163,754	157,386	160,028	164,323
固定負債	Long-Term Liabilities						
社債	Corporate Bond	-	10,000	20,000	20,000	20,000	20,000
長期借入金	Long-Term Debt	32,586	24,454	22,421	22,369	21,715	24,278
リース債務	Lease Obligations	3,550	2,889	2,404	2,454	1,767	1,439
繰延税金負債	Deferred Income Taxes	9,419	8,118	6,845	4,790	8,277	10,068
退職給付引当金	Provision for retirement benefits	11,791	10,081	9,425	10,773	11,267	11,546
役員退職慰労引当金	Provision for directors' retirement benefits	557	682	607	500	588	489
執行役員退職慰労引当金	Provision for officers' retirement benefits	583	667	688	660	663	666
持分法適用に伴う負債	Liabilities from application of equity method	91	-	-	-	-	105
その他	Others	611	868	807	847	958	1,384
固定負債合計	Total Long-Term Liabilities	59,193	57,761	63,201	62,396	65,238	69,977
負債合計	Total Liabilities	212,608	202,303	226,956	219,782	225,266	234,301
純資産の部	Net Assets						
株主資本	Stockholders' Equity						
資本金	Common Stock	17,009	17,009	17,009	17,009	17,009	17,009
資本剰余金	Additional Paid-in Capital	17,295	17,523	17,900	19,308	19,308	19,308
利益剰余金	Retained Earnings	97,962	114,642	127,904	135,891	144,436	154,144
自己株式	Treasury Stock	(4,742)	(6,755)	(5,345)	(793)	(794)	(795)
株主資本合計	Total Stockholders' Equity	127,526	142,420	157,469	171,415	179,959	189,666
その他の包括利益累計額	Accumulated Other Comprehensive Income(Loss)						
その他有価証券評価差額金	Unrealized Gain or Loss on Available-for-Sale Securities	14,673	12,208	13,413	9,155	16,533	19,636
繰延ヘッジ損益	Deferred Gain or Loss on Hedges	(4)	(1)	-	(0)	-	(0)
為替換算調整勘定	Cumulative Translation Adjustments	(7,952)	(11,823)	(15,971)	(16,336)	(6,492)	1,039
その他の包括利益累計額合計	Total Accumulated other comprehensive income(Loss)	6,716	383	(2,557)	(7,181)	10,040	20,675
少数株主持分	Minority Interests	10,290	10,940	11,827	8,986	9,782	11,069
純資産合計	Total Net Assets	144,533	153,744	166,739	173,221	199,783	221,411
負債及び純資産合計	Total Liabilities and Net Assets	357,141	356,048	393,695	393,004	425,050	455,713

連結損益計算書

Consolidated Income Statements

百万円/ Million ¥

		10/3	11/3	12/3	12/9	13/3	13/9
売上高	Net Sales	404,143	456,198	440,752	250,685	507,985	275,224
売上原価	Cost of Sales	353,303	389,142	384,643	216,389	441,316	239,091
売上総利益	Gross Profit	50,839	67,056	56,109	34,296	66,668	36,132
販売費及び一般管理費	Selling General and Administrative Expenses	32,053	34,298	33,616	18,651	36,648	18,922
営業利益	Operating Income	18,785	32,757	22,493	15,644	30,020	17,210
営業外収益	Non-Operating Income	3,638	4,658	4,294	1,728	7,130	2,652
受取利息及び配当金	Interest Income and Dividends Income	596	914	1,599	691	1,424	741
持分法による投資利益	Investment Profit on Equity Method	882	1,481	865	163	336	222
不動産賃貸料	Real Estate Rental Income	909	880	833	410	705	309
屑売却代	Waste and Scrap Sale Income	42	—	—	—	—	—
その他	Others	1,207	1,381	996	463	4,664	1,378
営業外費用	Non-Operating Expenses	4,792	4,007	2,903	1,143	2,243	1,094
支払利息	Interest Expense	1,316	960	887	412	777	297
固定資産除却損	Loss on Disposal of Fixed Assets	621	475	317	58	272	244
その他	Others	2,854	2,572	1,699	672	4,664	553
経常利益	Ordinary Income	17,631	33,407	23,884	16,229	34,907	18,767
特別利益	Extraordinary Gains	309	192	861	914	877	77
固定資産売却益	Gains on Sales of Fixed Assets	130	—	99	199	199	—
投資有価証券売却益	Gains on Sales of Investments in Securities	22	33	523	—	—	—
その他	Others	156	158	238	715	678	77
特別損失	Extraordinary Losses	2,617	2,651	945	2,162	3,083	35
減損損失	Impairment Loss on Fixed Assets	1,058	19	350	335	2,309	—
その他	Others	1,558	2,632	595	1,827	773	35
税金等調整前当期純利益	Income before Taxes and Minority Interest Income	15,323	30,948	23,799	14,981	32,701	18,810
法人税等	Income Taxes	4,422	9,274	6,328	3,965	10,769	5,074
法人税等調整額	Deferred Taxes	(447)	123	(731)	359	211	504
少数株主利益	Minority Interest Income	1,059	2,129	1,460	781	1,385	759
当期純利益	Net Income	10,290	19,420	16,741	9,876	20,333	12,472

連結キャッシュ・フロー計算書

Consolidated Cash Flow Statements

百万円/ Million ¥

		10/3	11/3	12/3	12/9	13/3	13/9
営業活動によるキャッシュ・フロー	Operating Activities						
税金等調整前当期純利益	Net Income before Income Taxes and Minority Interests	15,323	30,948	23,799	14,981	32,701	18,810
減価償却費	Depreciation & Amortization	24,074	22,584	21,371	10,321	21,393	10,253
減損損失	Impairment Loss on Fixed Assets	1,058	19	350	335	2,309	—
退職給付引当金増減額	Increase (Decrease) in Retirement Benefits	(1,679)	(1,675)	(503)	(21)	175	(228)
受取利息及び受取配当金	Interest and Dividends Received	(596)	(914)	(1,599)	(691)	(1,424)	(741)
支払利息	Interest Expenses	1,316	960	887	412	777	297
為替差損益	Exchange Profit or Loss	493	513	304	72	(872)	(276)
持分法による投資利益	Investment Profit on Equity Method	(882)	(1,481)	(865)	(163)	(336)	(222)
有形固定資産売却損益	(Gain) Loss on Property, Plant and Equipment	568	476	250	(149)	44	226
投資有価証券売却損益	(Gain) Loss on Sales of Short-Term Investments and Investment Securities	(14)	(33)	(503)	—	—	—
売上債権の増減額	(Increase) Decrease in Notes and Accounts Receivable	(26,519)	10,614	(25,111)	2,057	824	(3,845)
たな卸資産の増加額	(Increase) Decrease in Inventories	4,760	(2,038)	(1,380)	(274)	1,995	(1,067)
仕入債務の増減額	Increase (Decrease) in Notes and Accounts Payable	24,494	(3,124)	17,607	(16,521)	(22,843)	2,437
その他	Others	707	2,484	(2,441)	538	1,415	(1,229)
小計	Subtotal	43,107	59,333	32,167	10,898	36,162	24,413
利息及び配当金の受取額	Interest and Dividends Received in Cash	1,262	1,710	3,105	1,044	2,119	1,368
利息の支払額	Interest Paid	(1,306)	(955)	(871)	(424)	(795)	(319)
法人税等の支払額又は還付額(支払額)	Income taxes (paid) refund	(255)	(7,032)	(8,338)	(4,229)	(8,263)	(6,694)
営業活動によるキャッシュ・フロー	Net Cash Provided by (Used In) Operating Activities	42,807	53,056	26,063	7,288	29,222	18,767

連結キャッシュ・フロー計算書

Consolidated Cash Flow Statements

百万円/ Million ¥

		10/3	11/3	12/3	12/9	13/3	13/9
投資活動によるキャッシュ・フロー	Investing Activities						
定期預金の増減額	(Increase) Decrease in Time Deposits	107	327	(99)	93	336	85
有形固定資産の取得による支出	Capital Expenditures	(16,321)	(18,616)	(19,164)	(11,781)	(23,461)	(9,591)
有形固定資産の売却による収入	Proceeds from Sales of Property, Plant and Equipment	195	152	774	520	579	1,014
無形固定資産の増減額	(Increase) Decrease in Intangible Fixed Assets	(524)	(719)	(944)	(351)	(1,082)	(480)
投資有価証券の増減額	(Increase) Decrease in Investments in Securities	(857)	(46)	(8,174)	(1,673)	(2,561)	(3,185)
貸付金の増減額	(Increase) Decrease in Loans Receivable	(530)	266	(195)	(1,549)	(2,984)	(3,387)
その他	Others	153	(1,390)	673	(226)	45	(1,484)
投資活動によるキャッシュ・フロー	Net Cash Used in Investing Activities	(17,777)	(20,025)	(27,130)	(14,968)	(29,129)	(17,028)
財務活動によるキャッシュ・フロー	Financing Activities						
短期借入金の増減額	Increase (Decrease) in Short-Term Debt	(12,366)	(6,001)	920	51	(4,538)	125
長期借入金の増減額	Increase (Decrease) in Long-Term Debt	(7,637)	(10,241)	(2,064)	(2,923)	(3,807)	1,066
社債・ＣＰの発行による収入	Proceeds from issuance of corporate bond and commercial papers	9,000	22,000	25,000	12,000	28,000	20,000
社債・ＣＰの償還による支出	Redemption of corporate bond and commercial papers	(9,000)	(12,000)	(12,000)	(12,000)	(24,000)	(20,000)
自己株式取得による支出	Treasury Stock	(91)	(2,661)	(9)	(0)	(1)	(0)
リース債務の返済による支出	Repayment of lease obligation	(555)	(820)	(642)	(306)	(1,581)	(560)
配当金の支払額	Dividends Paid	(1,670)	(3,297)	(3,527)	(1,890)	(3,832)	(1,943)
少数株主への配当金の支払額	Dividends Paid to Minority Interests	(150)	(186)	(298)	(147)	(701)	(116)
その他	Others	6	(122)	1,967	151	151	—
財務活動によるキャッシュ・フロー	Net Cash Provided by (Used In) Financing Activities	(22,465)	(13,330)	9,347	(5,065)	(10,311)	(1,429)
現金及び現金同等物に係る換算差額	Effect of Exchange Rate Changes on Cash and Equivalents	549	(2,256)	(1,861)	5	4,153	3,067
現金及び現金同等物の増減額	Net Increase (Decrease) in Cash and Cash Equivalents	3,113	17,442	6,418	(12,739)	(6,064)	3,376
現金及び現金同等物の期首残高	Cash and Cash Equivalents at Beginning of Year	32,253	35,379	52,934	58,773	58,773	57,009
新規連結による現金及び現金同等物増加額	Increase in Cash and Cash Equivalents Accompanying Consolidation	99	—	—	2,467	4,300	1,740
連結子会社の決算期変更に伴う現金及び現金同等物の増減額	Increase (Decrease) in cash and cash equivalents resulting from changes in fiscal year end of consolidated subsidiaries	(86)	112	(579)	—	—	—
現金及び現金同等物の期末残高	Cash and Cash Equivalents at End of Year	35,379	52,934	58,773	48,501	57,009	62,126

収支状況 Income and Expenditures

1. 連結損益計算書 Consolidated Income Statement

百万円/Million ¥

	実績	実績	予想
	Actual	Actual	Forecast
	12/3	13/3	14/3
売上高 Net Sales	440,752	507,985	570,000
営業利益 Operating Income	22,493 5.1%	30,020 5.9%	40,000 7.0%
経常利益 Ordinary Income	23,884 5.4%	34,907 6.9%	42,000 7.4%
当期純利益 Net Income	16,741	20,333	28,000
1株当り利益 EPS	71.47	83.70	115.28

2. 連結貸借対照表 Consolidated Balance Sheet

百万円/Million ¥

	実績	実績	予想
	Actual	Actual	Forecast
	12/3	13/3	14/3
流動資産 Current Assets	212,907	221,914	250,800
有形固定資産 Property, Plant and Equipment, Net	117,178	128,841	137,600
投資等 Total Investments, Long-Term Receivables and Other Assets	63,610	74,294	81,600
総資産 Total Assets	393,695	425,050	470,000
有利子負債 Interest-Bearing Debt	71,003	71,958	63,700
その他負債 Other Liabilities	155,952	153,308	160,000
少数株主持分 Minority Interests	11,827	9,782	11,500
自己資本 Stockholders' Equity	154,911	190,000	234,800
負債・純資産計 Total Liabilities and Net Assets	393,695	425,050	470,000

ROE ※1	11.2%	11.8%	13.2%
ROA ※2	6.4%	8.5%	9.4%

※1) ROE = 当期利益 ÷ [(当期末純資産 + 前期末純資産) ÷ 2] × 100

※1) ROE = Net Income ÷ [(Net Assets of End of Year + Net Assets of Beginning of Year) ÷ 2] × 100

※2) ROA = 経常利益 ÷ [(当期末総資産 + 前期末総資産) ÷ 2] × 100

※2) ROA = Ordinary Income ÷ [(Total Assets of End of Year + Total Assets of Beginning of Year) ÷ 2] × 100

3. 分野別セグメント

Segment Information by Business Group

百万円/Million ¥

		実績	実績	予想
		Actual	Actual	Forecast
		12/3	13/3	14/3
懸架ばね事業	Automotive Suspension Spring Unit			
売上高	Net Sales	90,334	103,213	120,500
営業利益	Operating Income	6,814	10,245	13,900
利益率	Operating Margin	7.5%	9.9%	11.5%
シート事業	Automotive Seating Unit			
売上高	Net Sales	175,714	208,773	247,000
営業利益	Operating Income	8,134	13,543	16,000
利益率	Operating Margin	4.6%	6.5%	6.5%
精密部品事業	Precision Spring & Components Unit			
売上高	Net Sales	99,961	123,373	129,500
営業利益	Operating Income	3,508	2,919	6,100
利益率	Operating Margin	3.5%	2.4%	4.7%
産業機器ほか事業	Industry & Others			
売上高	Net Sales	74,742	72,625	73,000
営業利益	Operating Income	4,036	3,312	4,000
利益率	Operating Margin	5.4%	4.6%	5.5%
連結	Consolidated			
売上高	Net Sales	440,752	507,985	570,000
営業利益	Operating Income	22,493	30,020	40,000
利益率	Operating Margin	5.1%	5.9%	7.0%

4. 所在地別セグメント

Segment Information by Location

百万円/Million ¥

		実績	実績	予想
		Actual	Actual	Forecast
		12/3	13/3	14/3
日本	Japan			
売上高	Net Sales	313,677	333,230	340,709
営業利益	Operating Income	15,809	17,930	23,000
利益率	Operating Margin	5.0%	5.4%	6.8%
北米	North America			
売上高	Net Sales	39,711	56,951	73,825
営業利益	Operating Income	383	2,084	2,500
利益率	Operating Margin	1.0%	3.7%	3.4%
アジア	Asia			
売上高	Net Sales	87,363	117,803	155,466
営業利益	Operating Income	6,299	10,005	14,500
利益率	Operating Margin	7.2%	8.5%	9.3%
連結	Consolidated			
売上高	Net Sales	440,752	507,985	570,000
営業利益	Operating Income	22,493	30,020	40,000
利益率	Operating Margin	5.1%	5.9%	7.0%